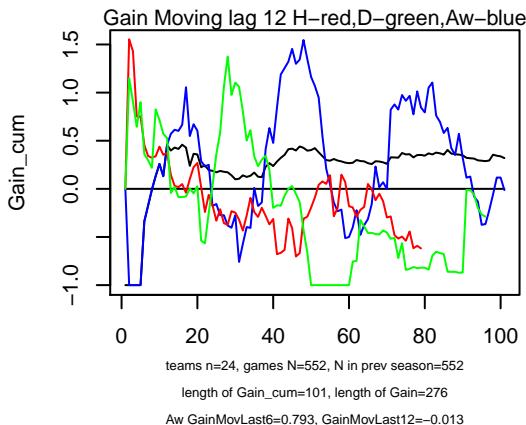
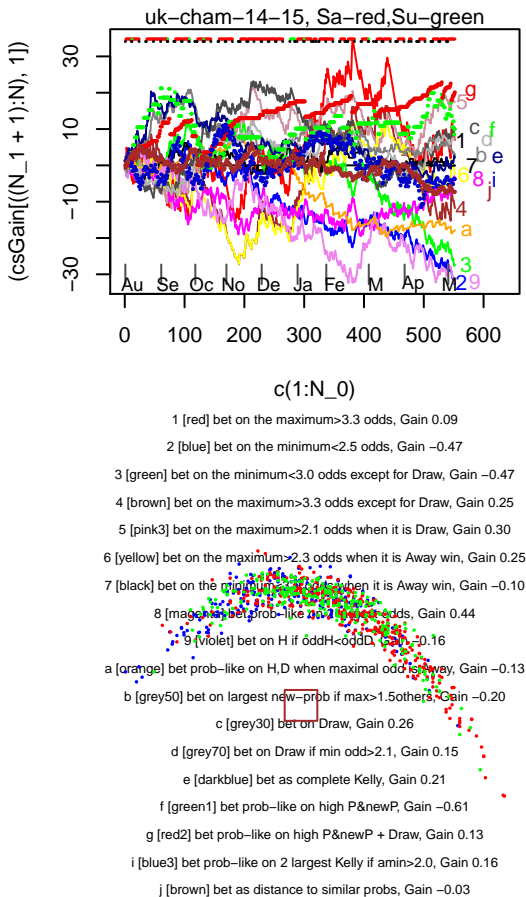


Gain_cum for uk-cham-14-15, Kelly, Aw-black

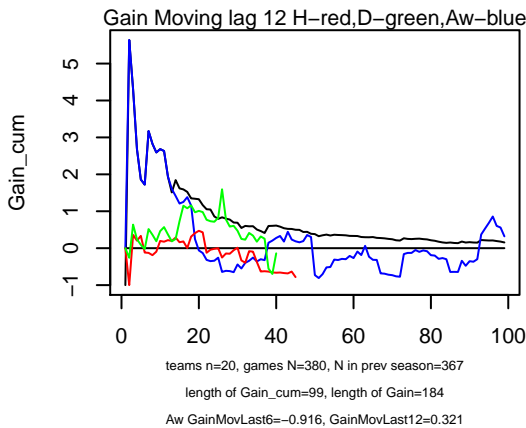


strategies that do not separate teams

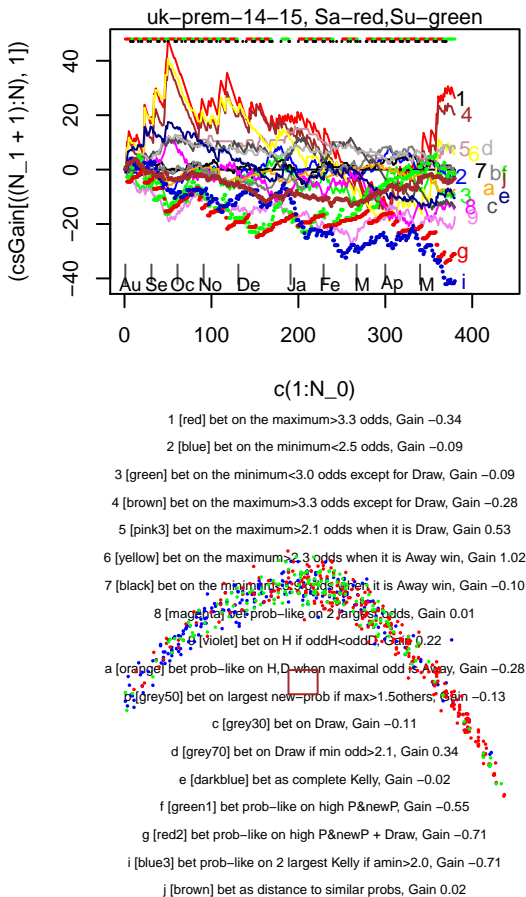


	Team H, Team Aw	Betfair probs	Date	Our probs	Kelly bets
Half Full-Time Goals	Betfair odds	complete Kelly	Bet amount index of strategies		
Wolves	4-2 Millwall	0.71,0.20,0.11	02/05Sa	0.59,0.29,0.14	
	Odds 1.40,5.00,9.00,	cKelly 0.00,0.39,0.15		Dist 0.95,0.27,0.00	
Watford	1-1 Sheffield	0.71,0.19,0.11	02/05Sa	0.50,0.25,0.25	
	Odds 1.40,5.25,9.00,	cKelly 0.00,0.43,0.49		Dist 0.97,0.23,0.00	
Nott'm For	1-2 Cardiff	0.50,0.26,0.26	02/05Sa	0.42,0.24,0.34	
	Odds 2.00,3.80,3.80,	cKelly 0.03,0.09,0.30		Dist 0.46,0.00,0.07	
Norwich	4-2 Fulham	0.69,0.21,0.13	02/05Sa	0.55,0.19,0.25	
	Odds 1.45,4.80,7.50,	cKelly 0.03,0.18,0.40		Dist 0.83,0.49,0.00	
Middlesbro	0-0 Brighton	0.62,0.24,0.17	02/05Sa	0.60,0.24,0.17	
	Odds 1.62,4.10,6.00,	cKelly 0.01,0.03,0.02		Dist 0.77,0.08,0.00	
Leeds	0-0 Rotherham	0.41,0.29,0.34	02/05Sa	0.36,0.26,0.38	
	Odds 2.45,3.50,2.90,	cKelly 0.03,0.05,0.18		Dist 0.00,0.23,0.20	
Derby	0-3 Reading	0.71,0.19,0.12	02/05Sa	0.51,0.29,0.20	
	Odds 1.40,5.20,8.50,	cKelly 0.00,0.52,0.35		Dist 0.97,0.22,0.00	
Charlton	0-3 Bournemouth	0.14,0.23,0.65	02/05Sa	0.21,0.34,0.45	
	Odds 7.00,4.40,1.53,	cKelly 0.00,0.55,0.00		Dist 0.02,0.00,0.36	
Brentford	3-0 Wigan	0.71,0.20,0.11	02/05Sa	0.62,0.22,0.16	
	Odds 1.40,5.00,9.00,	cKelly 0.00,0.19,0.17		Dist 0.95,0.27,0.00	
Bolton	0-1 Birmingham	0.43,0.28,0.32	02/05Sa	0.33,0.33,0.34	
	Odds 2.30,3.60,3.13,	cKelly 0.02,0.05,0.17		Dist 0.10,0.00,0.62	
Blackpool	0-0 Huddersfie	0.23,0.26,0.54	02/05Sa	0.20,0.29,0.50	
	Odds 4.33,3.90,1.85,	cKelly 0.04,0.15,0.04		Dist 0.02,0.00,0.23	
Blackburn	3-2 Ipswich	0.32,0.29,0.42	02/05Sa	0.26,0.26,0.48	
	Odds 3.10,3.50,2.40,	cKelly 0.00,0.05,0.32		Dist 0.15,0.00,0.24	
Rotherham	2-1 Reading	0.53,0.28,0.22	28/04Tu	0.36,0.30,0.34	
	Odds 1.90,3.60,4.60,	cKelly 0.00,0.27,0.47		Dist 0.75,0.22,0.00	
Bournemouth	3-0 Bolton	0.78,0.16,0.08	27/04Mo	0.45,0.33,0.23	
	Odds 1.29,6.25,12.00,	cKelly 0.00,0.87,0.56		Dist 0.99,0.26,0.00	
Wigan	0-1 Wolves	0.32,0.29,0.42	25/04Sa	0.12,0.28,0.61	
	Odds 3.13,3.50,2.40,	cKelly 0.00,0.17,0.93		Dist 0.15,0.00,0.24	
Sheffield	1-2 Leeds	0.57,0.27,0.19	25/04Sa	0.37,0.29,0.34	
	Odds 1.75,3.75,5.25,	cKelly 0.00,0.32,0.54		Dist 0.71,0.00,0.10	
Rotherham	1-1 Norwich	0.17,0.24,0.62	25/04Sa	0.23,0.26,0.51	
	Odds 6.00,4.20,1.62,	cKelly 0.25,0.19,0.00		Dist 0.03,0.00,0.36	
Reading	0-2 Brentford	0.27,0.29,0.47	25/04Sa	0.26,0.22,0.52	
	Odds 3.70,3.50,2.15,	cKelly 0.05,0.01,0.29		Dist 0.00,0.34,0.04	
Millwall	3-3 Derby	0.22,0.26,0.54	25/04Sa	0.13,0.30,0.61	
	Odds 4.50,3.80,1.85,	cKelly 0.00,0.16,0.42		Dist 0.09,0.00,0.38	
Ipswich	2-1 Nott'm For	0.60,0.24,0.19	25/04Sa	0.51,0.23,0.26	
	Odds 1.67,4.20,5.40,	cKelly 0.01,0.11,0.26		Dist 0.80,0.11,0.00	
Huddersfie	2-2 Blackburn	0.43,0.28,0.32	25/04Sa	0.34,0.29,0.37	
	Odds 2.30,3.60,3.13,	cKelly 0.00,0.14,0.27		Dist 0.10,0.00,0.62	
Fulham	4-3 Middlesbro	0.19,0.26,0.58	25/04Sa	0.18,0.17,0.65	
	Odds 5.40,3.80,1.73,	cKelly 0.04,0.01,0.48		Dist 0.19,0.00,0.67	
Cardiff	3-2 Blackpool	0.65,0.23,0.14	25/04Sa	0.48,0.27,0.25	
	Odds 1.53,4.33,7.00,	cKelly 0.00,0.33,0.39		Dist 0.76,0.05,0.00	
Brighton	0-2 Watford	0.24,0.26,0.53	25/04Sa	0.28,0.21,0.52	
	Odds 4.20,3.80,1.87,	cKelly 0.15,0.02,0.08		Dist 0.04,0.00,0.25	
Birmingham	1-0 Charlton	0.43,0.29,0.29	25/04Sa	0.35,0.34,0.32	
	Odds 2.30,3.40,3.40,	cKelly 0.00,0.21,0.16		Dist 0.58,0.25,0.00	
Reading	0-1 Birmingham	0.49,0.28,0.26	22/04We	0.29,0.30,0.41	
	Odds 2.05,3.60,3.90,	cKelly 0.00,0.28,0.62		Dist 0.67,0.23,0.00	
Blackburn	2-0 Millwall	0.48,0.28,0.27	21/04Tu	0.52,0.29,0.19	
	Odds 2.10,3.60,3.70,	cKelly 0.29,0.10,0.00		Dist 0.72,0.23,0.00	

Gain_cum for uk-prem-14-15, Kelly, Aw-black

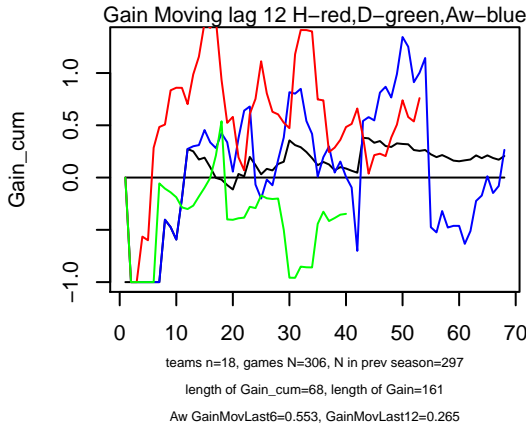


strategies that do not separate teams

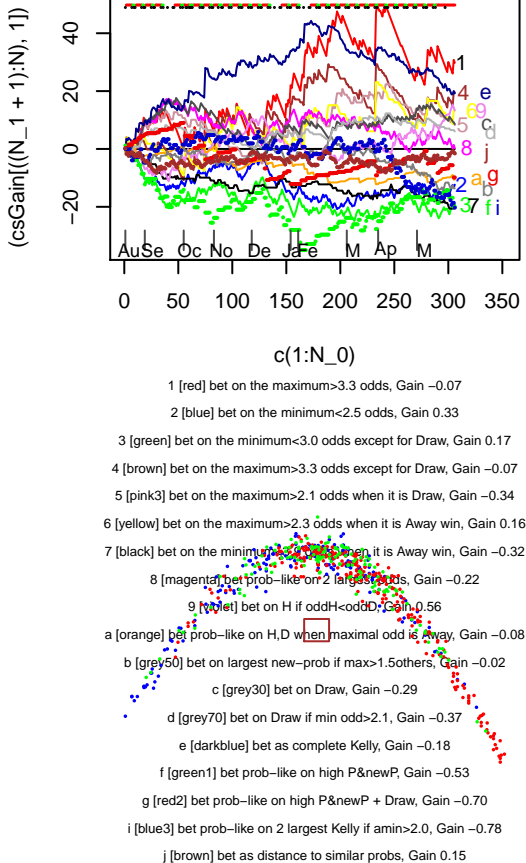


	Team H, Team Aw,	Betfair probs,	Date,	Our probs	Kelly bets
Half Full-Time Goals,	Betfair odds,	complete Kelly,	Bet amount indexes of strategies		
Hull	,Tottenham	0.34,0.29,0.47,	23 Nov	0.22,0.20,0.58, Bet,	0, 0, 0.21A
1.4 2.6	Odds ,2.94,3.45,2.12,cKelly--	,0.08,0.11,0.71	Bet 0.23 89j,	0.73 58dj,	0.00
			Dist bet 0.02,0.02,0.00		
Arsenal	,Man United	0.44,0.29,0.32,	22 Nov	0.38,0.20,0.42, Bet,	0, 0, 0.14A
1.1 2.4	Odds ,2.28,3.45,3.10,cKelly--	,0.11,0.06,0.42	Bet 0.23 9j,	0.73 58dj,	0.00 8
			Dist bet 0.54,0.18,0.00		
Leicester	,Sunderland	0.48,0.32,0.29,	22 Nov	0.36,0.28,0.36, Bet,	0, 0, 0.10A
1.0 2.3	Odds ,2.10,3.15,3.45,cKelly--	,0.06,0.14,0.37	Bet 0.24 9j,	0.23 8dj,	1.02 68
			Dist bet 0.86,0.42,0.00		
Chelsea	,West Brom	0.84,0.19,0.08,	22 Nov	0.62,0.25,0.13, Bet,	0, 0.08A, 0.05A
1.4 2.1	Odds ,1.19,5.40,12.00,cKelly--	,0.00,0.69,0.34	Bet 0.24 9j,	0.00 8,	1.02 68j
			Dist bet 1.00,0.00,0.12		
Everton	,West Ham	0.60,0.27,0.21,	22 Nov	0.38,0.30,0.33, Bet,	0, 0.0U, 0.15A
0.7 1.8	Odds ,1.66,3.70,4.70,cKelly--	,0.00,0.38,0.53	Bet 0.24 9j,	0.01 8j,	1.02 68
			Dist bet 0.64,0.55,0.00		
Stoke	,Burnley	0.60,0.28,0.19,	22 Nov	0.49,0.25,0.27, Bet,	0, 0, 0.09A
1.8 2.7	Odds ,1.68,3.60,5.20,cKelly--	,0.05,0.15,0.30	Bet 0.24 9j,	0.01 8j,	1.02 68
			Dist bet 0.57,0.15,0.00		
Newcastle	,QPR	0.61,0.29,0.22,	22 Nov	0.46,0.21,0.34, Bet,	0, 0, 0.15B
1.8 3.5	Odds ,1.64,3.45,4.60,cKelly--	,0.14,0.23,0.53	Bet 0.23 9j,	0.00 8,	1.02 68j
			Dist bet 0.54,0.00,0.13		
Man City	,Swansea	0.76,0.24,0.13,	22 Nov	0.60,0.20,0.20, Bet,	0, 0, 0.08B
1.0 2.8	Odds ,1.32,4.20,7.60,cKelly--	,0.07,0.31,0.34	Bet 0.24 9j,	0.01 8j,	1.02 68
			Dist bet 0.76,0.15,0.00		
Stoke	6-1 Liverpool	0.29,0.28,0.47	24/05Su	0.32,0.20,0.49	
	Odds ,3.50,3.60,2.15,	cKelly 0.16,0.00,0.18	Dist 0.04,0.13,0.00		
Newcastle	2-0 West Ham	0.56,0.25,0.22	24/05Su	0.31,0.21,0.48	
	Odds ,1.80,4.00,4.60,	cKelly 0.07,0.27,0.94	Dist 0.61,0.02,0.00		
Man City	2-0 Southampton	0.64,0.22,0.17	24/05Su	0.56,0.21,0.23	
	Odds ,1.57,4.60,5.75,	cKelly 0.02,0.09,0.22	Dist 0.74,0.00,0.01		
Leicester	5-1 QPR	0.64,0.22,0.17	24/05Su	0.43,0.23,0.34	
	Odds ,1.57,4.50,6.00,	cKelly 0.00,0.26,0.60	Dist 0.75,0.05,0.00		
Hull	0-0 Man United	0.31,0.28,0.44	24/05Su	0.15,0.15,0.70	
	Odds ,3.20,3.60,2.25,	cKelly 0.11,0.13,1.28	Dist 0.12,0.11,0.00		
Everton	0-1 Tottenham	0.43,0.27,0.32	24/05Su	0.31,0.27,0.42	
	Odds ,2.30,3.70,3.13,	cKelly 0.00,0.13,0.45	Dist 0.82,0.03,0.00		
Crystal Pa	1-0 Swansea	0.44,0.28,0.31	24/05Su	0.33,0.21,0.46	
	Odds ,2.25,3.60,3.25,	cKelly 0.09,0.11,0.63	Dist 0.86,0.05,0.00		
Chelsea	3-1 Sunderland	0.74,0.19,0.10	24/05Su	0.66,0.32,0.08	
	Odds ,1.36,5.25,10.50,	cKelly 0.03,0.43,0.05	Dist 0.87,0.00,0.13		
Aston Vill	0-1 Burnley	0.48,0.28,0.27	24/05Su	0.32,0.29,0.39	
	Odds ,2.10,3.60,3.70,	cKelly 0.00,0.20,0.48	Dist 0.70,0.00,0.03		
Arsenal	4-1 West Brom	0.71,0.20,0.11	24/05Su	0.58,0.25,0.17	
	Odds ,1.40,5.00,9.00,	cKelly 0.00,0.31,0.24	Dist 0.86,0.00,0.21		
Arsenal	0-0 Sunderland	0.78,0.17,0.08	20/05We	0.59,0.30,0.13	
	Odds ,1.29,6.00,13.00,	cKelly 0.00,0.59,0.24	Dist 0.96,0.00,0.08		
West Brom	3-0 Chelsea	0.24,0.29,0.50	18/05Mo	0.10,0.24,0.65	
	Odds ,4.20,3.50,2.00,	cKelly 0.03,0.10,0.85	Dist 0.32,0.23,0.00		
Swansea	2-4 Man City	0.20,0.24,0.58	17/05Su	0.20,0.20,0.60	
	Odds ,5.00,4.10,1.73,	cKelly 0.02,0.00,0.16	Dist 0.08,0.00,0.37		
Man United	1-1 Arsenal	0.41,0.29,0.33	17/05Su	0.43,0.18,0.39	
	Odds ,2.45,3.50,3.00,	cKelly 0.21,0.00,0.27	Dist 0.75,0.00,0.02		
West Ham	1-2 Everton	0.33,0.29,0.40	16/05Sa	0.33,0.30,0.37	
	Odds ,3.00,3.40,2.50,	cKelly 0.03,0.05,0.01	Dist 0.53,0.21,0.00		
Tottenham	2-0 Hull	0.57,0.25,0.21	16/05Sa	0.59,0.19,0.22	
	Odds ,1.75,4.00,4.75,	cKelly 0.18,0.00,0.06	Dist 0.50,0.00,0.03		
Sunderland	0-0 Leicester	0.36,0.30,0.36	16/05Sa	0.37,0.28,0.35	
	Odds ,2.80,3.30,2.75,	cKelly 0.07,0.01,0.02	Dist 0.45,0.00,0.47		
Southampton	6-1 Aston Vill	0.56,0.28,0.19	16/05Sa	0.53,0.26,0.21	
	Odds ,1.80,3.60,5.25,	cKelly 0.02,0.04,0.08	Dist 0.60,0.00,0.14		
QPR	2-1 Newcastle	0.33,0.29,0.41	16/05Sa	0.33,0.20,0.47	
	Odds ,3.00,3.50,2.45,	cKelly 0.08,0.00,0.30	Dist 0.00,0.08,0.18		

Gain_cum for germ-1-14-15, Kelly, Aw-black



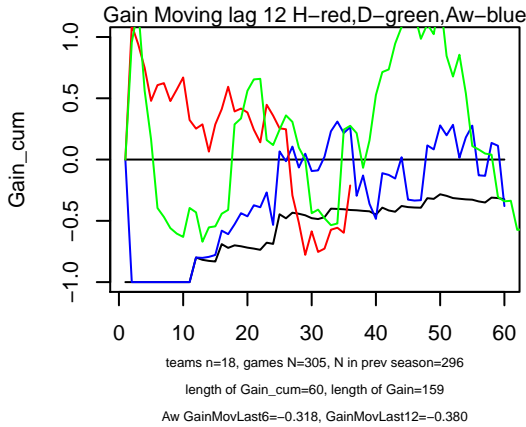
strategies that do not separate teams



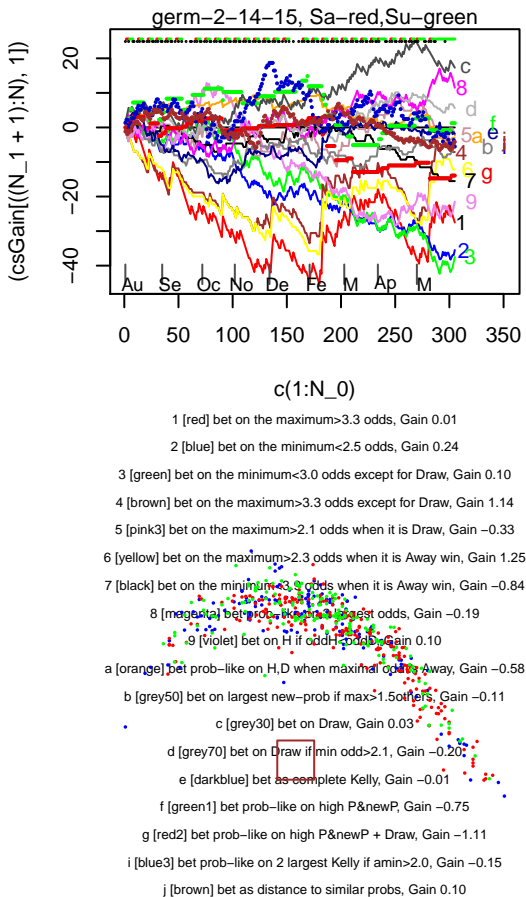
Team H, Team Aw, Betfair probs, Date, Our probs, Kelly bets
Half|Full-Time Goals, Betfair odds, complete Kelly, Bet amount|indexes of strategies

Paderborn	1-2 Stuttgart	0.30,0.25,0.48	23/05Sa	0.43,0.28,0.29
Odds	3.30,4.00,2.10,	kKelly 0.57,0.25,0.00	Dist	0.50,0.00,0.04
M'gladbach	1-3 Augsburg	0.62,0.22,0.17	23/05Sa	0.53,0.22,0.25
Odds	1.60,4.50,5.75,	kKelly 0.00,0.11,0.27	Dist	0.88,0.00,0.11
Hoffenheim	2-1 Hertha	0.50,0.28,0.27	23/05Sa	0.51,0.19,0.30
Odds	2.00,3.60,3.75,	kKelly 0.17,0.00,0.15	Dist	0.51,0.00,0.07
Hannover	2-1 Freiburg	0.50,0.28,0.26	23/05Sa	0.29,0.28,0.43
Odds	2.00,3.60,3.80,	kKelly 0.00,0.23,0.66	Dist	0.51,0.00,0.07
Hamburg	2-0 Schalke 04	0.42,0.26,0.35	23/05Sa	0.21,0.26,0.53
Odds	2.40,3.80,2.88,	kKelly 0.00,0.19,0.82	Dist	0.73,0.00,0.20
FC Koln	2-2 Wolfsburg	0.26,0.26,0.52	23/05Sa	0.11,0.30,0.59
Odds	3.90,3.80,1.93,	kKelly 0.00,0.20,0.52	Dist	0.83,0.06,0.00
Ein Frankf	2-1 Leverkusen	0.22,0.23,0.57	23/05Sa	0.26,0.32,0.42
Odds	4.50,4.33,1.75,	kKelly 0.27,0.40,0.00	Dist	0.46,0.00,0.08
Dortmund	3-2 Werder Bre	0.77,0.16,0.10	23/05Sa	0.41,0.22,0.37
Odds	1.30,6.25,10.00,	kKelly 0.00,0.63,0.90	Dist	0.90,0.00,0.04
Bayern Mun	2-0 Mainz	0.82,0.14,0.08	23/05Sa	0.64,0.22,0.15
Odds	1.22,7.00,13.00,	kKelly 0.00,0.47,0.30	Dist	1.00,0.00,0.12
Wolfsburg	2-1 Dortmund	0.38,0.28,0.38	16/05Sa	0.58,0.21,0.20
Odds	2.63,3.60,2.63,	kKelly 0.94,0.16,0.07	Dist	0.61,0.00,1.00
Werder Bre	0-2 M'gladbach	0.23,0.25,0.55	16/05Sa	0.24,0.23,0.53
Odds	4.33,4.00,1.83,	kKelly 0.06,0.02,0.03	Dist	0.54,0.00,0.07
Stuttgart	2-1 Hamburg	0.57,0.25,0.21	16/05Sa	0.29,0.24,0.47
Odds	1.75,4.00,4.75,	kKelly 0.02,0.32,0.93	Dist	0.63,0.53,0.00
Schalke 04	1-0 Paderborn	0.61,0.23,0.19	16/05Sa	0.55,0.29,0.16
Odds	1.65,4.40,5.40,	kKelly 0.04,0.25,0.05	Dist	0.78,0.00,0.11
Mainz	2-0 FC Koln	0.47,0.28,0.29	16/05Sa	0.36,0.36,0.31
Odds	2.15,3.60,3.50,	kKelly 0.00,0.34,0.18	Dist	0.31,0.00,0.57
Leverkusen	2-0 Hoffenheim	0.69,0.19,0.14	16/05Sa	0.45,0.26,0.28
Odds	1.44,5.25,7.00,	kKelly 0.00,0.48,0.56	Dist	0.74,0.21,0.00
Hertha	0-0 Ein Frankf	0.49,0.28,0.27	16/05Sa	0.28,0.23,0.50
Odds	2.05,3.60,3.70,	kKelly 0.07,0.23,0.88	Dist	0.44,0.00,0.74
Freiburg	2-1 Bayern Mun	0.15,0.22,0.65	16/05Sa	0.14,0.21,0.66
Odds	6.50,4.60,1.53,	kKelly 0.00,0.01,0.07	Dist	0.32,0.00,0.14
Augsburg	1-2 Hannover	0.43,0.29,0.32	16/05Sa	0.54,0.23,0.23
Odds	2.30,3.50,3.13,	kKelly 0.05,0.08,0.05	Dist	0.71,0.41,0.00
Paderborn	1-3 Wolfsburg	0.21,0.24,0.59	10/05Su	0.10,0.29,0.64
Odds	4.80,4.20,1.70,	kKelly 0.00,0.19,0.42	Dist	0.44,0.00,0.10
FC Koln	2-0 Schalke 04	0.35,0.30,0.37	10/05Su	0.18,0.31,0.52
Odds	2.88,3.30,2.70,	kKelly 0.00,0.19,0.66	Dist	0.45,0.05,0.00
Stuttgart	2-0 Mainz	0.49,0.26,0.28	09/05Sa	0.22,0.28,0.50
Odds	2.05,3.80,3.60,	kKelly 0.00,0.32,0.91	Dist	0.81,0.09,0.00
M'gladbach	3-0 Leverkusen	0.39,0.29,0.34	09/05Sa	0.43,0.29,0.28
Odds	2.55,3.40,2.90,	kKelly 0.20,0.06,0.00	Dist	0.20,0.00,0.04
Hannover	1-1 Werder Bre	0.49,0.26,0.29	09/05Sa	0.28,0.23,0.49
Odds	2.05,3.80,3.50,	kKelly 0.05,0.21,0.83	Dist	0.81,0.09,0.00
Ein Frankf	3-1 Hoffenheim	0.36,0.27,0.41	09/05Sa	0.39,0.23,0.38
Odds	2.75,3.75,2.45,	kKelly 0.14,0.03,0.04	Dist	0.28,0.00,0.46
Dortmund	2-0 Hertha	0.77,0.17,0.08	05/05Sa	0.54,0.19,0.28
Odds	1.30,5.75,12.00,	kKelly 0.00,0.38,0.58	Dist	0.76,0.21,0.00
Bayern Mun	0-1 Augsburg	0.65,0.23,0.14	09/05Sa	0.65,0.16,0.19
Odds	1.53,4.40,7.00,	kKelly 0.11,0.00,0.13	Dist	0.89,0.00,0.05
Hamburg	1-1 Freiburg	0.44,0.29,0.30	08/05Fr	0.33,0.30,0.38
Odds	2.25,3.50,3.30,	kKelly 0.00,0.15,0.34	Dist	0.82,0.39,0.00

Gain_cum for germ-2-14-15, Kelly, Aw-black

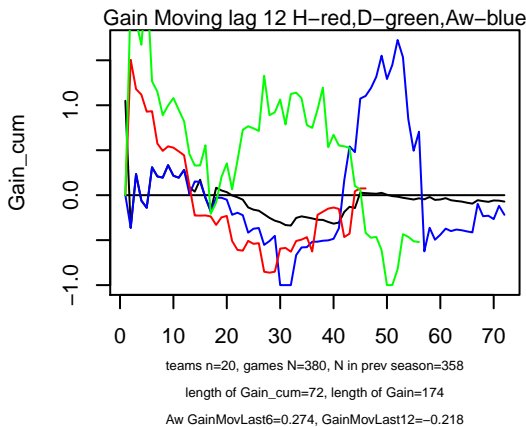


strategies that do not separate teams

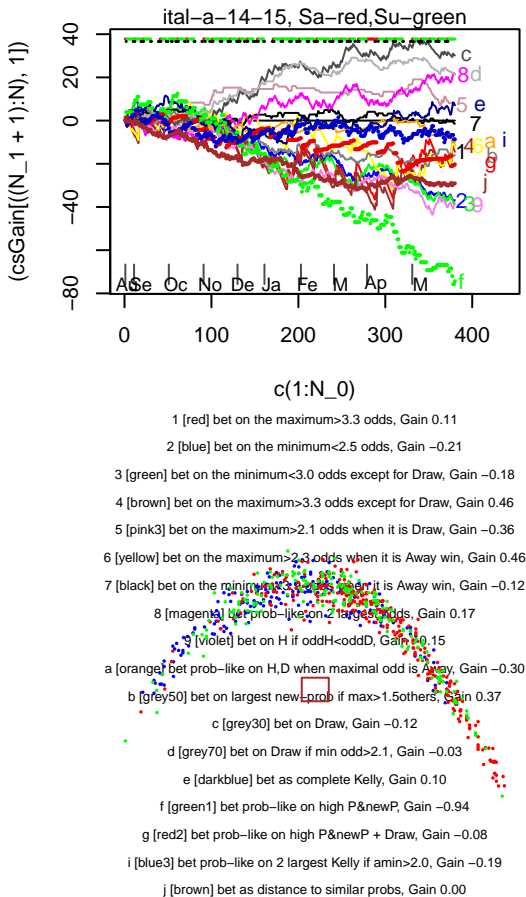


Team H, Team Aw,	Betfair probs,	Date,	Our probs	Kelly bets
Half Full-Time Goals,	Betfair odds, complete Kelly,	Bet amount indexes of strategies		
Munich 186,Fortuna Du,0.34,0.29,0.38, 10 Nov	0.46,0.28,0.25, Bet,	0U,	0,	0
1.1 2.6 Odds ,2.96,3.45,2.62,cKelly-	-0.53,0.12,0.01	Bet 0.13 9j,	0.02 1c,	0.11 3j
	Dist bet 0.26,0.00,0.06			
Union Berl 2-0 Braunschwe	0.41,0.27,0.36	24/05Su	0.29,0.30,0.40	
Odds ,2.45,3.70,2.75,	cKelly 0.00,0.19,0.27	Dist 0.42,0.00,0.05		
RB Leipzig 2-0 Greuther F	0.38,0.28,0.38	24/05Su	0.48,0.31,0.21	
Odds ,2.60,3.60,2.63,	cKelly 0.51,0.24,0.00	Dist 0.71,0.00,0.21		
Nurnberg 2-1 Aalen	0.62,0.23,0.19	24/05Su	0.39,0.32,0.30	
Odds ,1.62,4.30,5.25,	cKelly 0.00,0.50,0.49	Dist 0.88,0.11,0.00		
Karlsruhe 1-0 Munich 186	0.59,0.25,0.20	24/05Su	0.53,0.35,0.18	
Odds ,1.70,4.00,5.00,	cKelly 0.03,0.34,0.06	Dist 0.81,0.00,0.14		
Kaiserslau 1-1 Ingolstadt	0.64,0.23,0.17	24/05Su	0.38,0.32,0.30	
Odds ,1.57,4.33,5.75,	cKelly 0.00,0.57,0.55	Dist 0.91,0.14,0.00		
Heidenheim 2-2 Erzgebirge	0.37,0.26,0.41	24/05Su	0.45,0.21,0.34	
Odds ,2.70,3.80,2.45,	cKelly 0.39,0.06,0.05	Dist 0.38,0.00,0.08		
Fortuna Du 2-3 Frankfurt	0.40,0.26,0.38	24/05Su	0.39,0.34,0.28	
Odds ,2.50,3.90,2.63,	cKelly 0.12,0.32,0.02	Dist 0.33,0.06,0.00		
Darmstadt 1-0 St Pauli	0.52,0.26,0.25	24/05Su	0.55,0.27,0.18	
Odds ,1.91,3.80,4.00,	cKelly 0.22,0.06,0.00	Dist 0.35,0.12,0.00		
Bochum 0-0 Sandhausen	0.43,0.28,0.33	24/05Su	0.35,0.37,0.32	
Odds ,2.30,3.60,3.00,	cKelly 0.02,0.35,0.10	Dist 0.51,0.00,0.16		
St Pauli 5-1 Bochum	0.55,0.25,0.25	17/05Su	0.29,0.28,0.43	
Odds ,1.83,4.00,4.00,	cKelly 0.00,0.37,0.75	Dist 0.57,0.01,0.00		
Sandhausen 0-2 Fortuna Du	0.49,0.29,0.27	17/05Su	0.32,0.37,0.35	
Odds ,2.05,3.50,3.70,	cKelly 0.00,0.42,0.40	Dist 0.82,0.00,0.33		
Munich 186 2-1 Nurnberg	0.41,0.29,0.36	17/05Su	0.22,0.26,0.53	
Odds ,2.45,3.50,2.75,	cKelly 0.03,0.18,0.77	Dist 0.58,0.00,0.24		
Ingolstadt 2-1 RB Leipzig	0.59,0.26,0.19	17/05Su	0.35,0.31,0.34	
Odds ,1.70,3.80,5.20,	cKelly 0.00,0.45,0.59	Dist 0.46,0.06,0.00		
Greuther F 1-0 Darmstadt	0.38,0.29,0.36	17/05Su	0.15,0.35,0.55	
Odds ,2.60,3.40,2.75,	cKelly 0.00,0.37,0.85	Dist 0.31,0.08,0.00		
Frankfurt 1-3 Union Berl	0.49,0.28,0.28	17/05Su	0.26,0.32,0.42	
Odds ,2.05,3.60,3.60,	cKelly 0.00,0.37,0.65	Dist 0.22,0.16,0.00		
Erzgebirge 0-0 Kaiserslau	0.24,0.27,0.53	17/05Su	0.18,0.26,0.53	
Odds ,4.10,3.75,1.87,	cKelly 0.00,0.05,0.21	Dist 0.45,0.00,0.32		
Braunschwe 0-2 Karlsruhe	0.39,0.29,0.37	17/05Su	0.32,0.35,0.34	
Odds ,2.55,3.50,2.70,	cKelly 0.04,0.28,0.09	Dist 0.69,0.00,0.23		
Aalen 2-4 Heidenheim	0.53,0.27,0.24	17/05Su	0.35,0.32,0.33	
Odds ,1.87,3.75,4.10,	cKelly 0.00,0.35,0.42	Dist 0.52,0.33,0.00		
Karlsruhe 0-1 Darmstadt	0.49,0.29,0.26	11/05Mo	0.26,0.40,0.35	
Odds ,2.05,3.40,3.90,	cKelly 0.00,0.56,0.48	Dist 0.14,0.57,0.00		
Nurnberg 3-1 Braunschwe	0.42,0.29,0.32	10/05Su	0.34,0.25,0.41	
Odds ,2.38,3.40,3.13,	cKelly 0.05,0.08,0.39	Dist 0.31,0.01,0.00		
Heidenheim 3-0 Greuther F	0.36,0.29,0.39	10/05Su	0.39,0.30,0.30	
Odds ,2.80,3.40,2.55,	cKelly 0.21,0.11,0.00	Dist 0.53,0.60,0.00		
Bochum 3-1 Ingolstadt	0.23,0.27,0.54	10/05Su	0.20,0.36,0.48	
Odds ,4.33,3.75,1.85,	cKelly 0.06,0.34,0.04	Dist 0.42,0.00,0.34		
Union Berl 1-2 Erzgebirge	0.45,0.29,0.33	09/05Sa	0.48,0.26,0.27	
Odds ,2.20,3.40,3.00,	cKelly 0.22,0.06,0.03	Dist 0.00,0.30,0.27		
Kaiserslau 0-2 St Pauli	0.69,0.22,0.13	09/05Sa	0.58,0.27,0.15	
Odds ,1.45,4.60,7.50,	cKelly 0.16,0.06,0.13	Dist 0.69,0.00,0.13		
RB Leipzig 0-4 Sandhausen	0.60,0.26,0.18	08/05Fr	0.47,0.32,0.21	
Odds ,1.67,3.80,5.50,	cKelly 0.00,0.32,0.18	Dist 0.48,0.00,0.07		
Frankfurt 0-1 Munich 186	0.40,0.29,0.36	08/05Fr	0.42,0.29,0.29	
Odds ,2.50,3.50,2.80,	cKelly 0.16,0.06,0.00	Dist 0.64,0.00,0.22		

Gain_cum for ital-a-14-15, Kelly, Aw-black



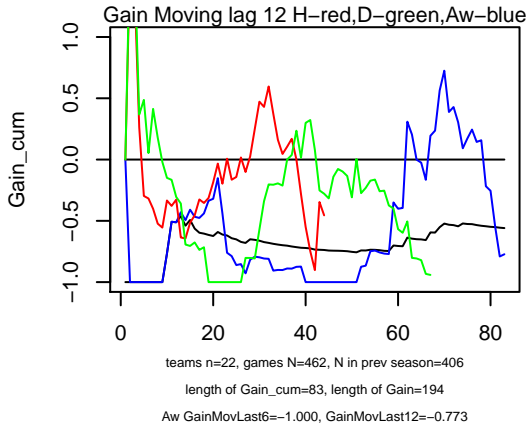
strategies that do not separate teams



Team H, Team Aw, Betfair probs, Date, Our probs, Kelly bets
Half|Full-Time Goals, Betfair odds, complete Kelly, Bet amount|indexes of strategies

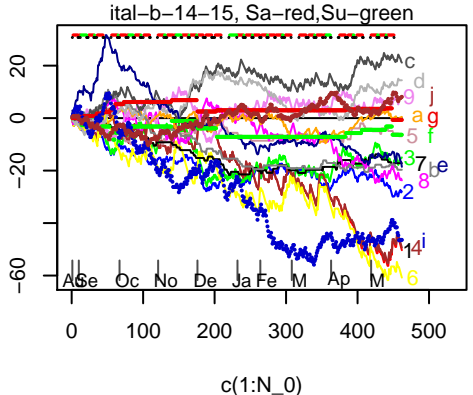
Torino	5-0	Cesena	0.74,0.19,0.10	31/05Su	0.53,0.34,0.17	
	Odds	1.36,5.25,10.00,	cKelly 0.00,0.66,0.31	Dist	0.88,0.29,0.00	
Sassuolo	3-1	Genoa	0.36,0.27,0.40	31/05Su	0.26,0.33,0.41	
	Odds	2.80,3.70,2.50,	cKelly 0.00,0.24,0.14	Dist	0.32,0.00,0.14	
Sampdoria	2-2	Parma	0.74,0.19,0.11	31/05Su	0.47,0.29,0.24	
	Odds	1.36,5.40,9.50,	cKelly 0.00,0.63,0.50	Dist	0.92,0.28,0.00	
Roma	1-2	Palermo	0.71,0.20,0.12	31/05Su	0.42,0.36,0.22	
	Odds	1.40,5.00,8.50,	cKelly 0.00,0.82,0.47	Dist	0.77,0.23,0.00	
Napoli	2-4	Lazio	0.48,0.29,0.27	31/05Su	0.46,0.17,0.37	
	Odds	2.10,3.50,3.70,	cKelly 0.15,0.02,0.37	Dist	0.78,0.00,0.48	
Inter	4-3	Empoli	0.65,0.22,0.16	31/05Su	0.36,0.37,0.30	
	Odds	1.55,4.50,6.25,	cKelly 0.00,0.74,0.59	Dist	0.77,0.15,0.00	
Fiorentina	3-0	Chievo	0.74,0.19,0.11	31/05Su	0.45,0.34,0.23	
	Odds	1.36,5.25,9.50,	cKelly 0.00,0.78,0.51	Dist	0.88,0.29,0.00	
Cagliari	4-3	Udinese	0.43,0.28,0.32	31/05Su	0.25,0.25,0.50	
	Odds	2.30,3.60,3.13,	cKelly 0.03,0.18,0.37	Dist	0.43,0.00,0.13	
Verona	2-2	Juventus	0.19,0.24,0.60	30/05Sa	0.08,0.21,0.72	
	Odds	5.25,4.10,1.67,	cKelly 0.02,0.07,0.81	Dist	0.01,0.00,0.35	
Atalanta	1-3	Milan	0.35,0.28,0.40	30/05Sa	0.23,0.33,0.44	
	Odds	2.88,3.60,2.50,	cKelly 0.00,0.24,0.29	Dist	0.26,0.00,0.17	
Lazio	1-2	Roma	0.41,0.30,0.32	25/05Mo	0.35,0.25,0.40	
	Odds	2.45,3.30,3.13,	cKelly 0.06,0.06,0.33	Dist	0.43,0.22,0.00	
Udinese	0-1	Sassuolo	0.50,0.27,0.26	24/05Su	0.34,0.33,0.33	
	Odds	2.00,3.70,3.90,	cKelly 0.00,0.34,0.38	Dist	0.71,0.00,0.28	
Parma	2-2	Verona	0.37,0.28,0.38	24/05Su	0.35,0.21,0.43	
	Odds	2.70,3.60,2.63,	cKelly 0.07,0.01,0.25	Dist	0.32,0.04,0.00	
Palermo	2-3	Fiorentina	0.28,0.31,0.47	24/05Su	0.31,0.33,0.36	
	Odds	3.60,3.25,2.15,	cKelly 0.20,0.19,0.00	Dist	0.42,0.00,0.45	
Milan	3-0	Torino	0.39,0.29,0.34	24/05Su	0.29,0.32,0.38	
	Odds	2.55,3.40,2.90,	cKelly 0.00,0.18,0.23	Dist	0.74,0.38,0.00	
Empoli	1-1	Sampdoria	0.40,0.29,0.33	24/05Su	0.26,0.39,0.41	
	Odds	2.50,3.40,3.00,	cKelly 0.00,0.42,0.39	Dist	0.76,0.44,0.00	
Chievo	1-1	Atalanta	0.47,0.30,0.26	24/05Su	0.35,0.35,0.30	
	Odds	2.15,3.30,3.80,	cKelly 0.00,0.26,0.23	Dist	0.68,0.00,0.21	
Cesena	0-1	Cagliari	0.39,0.28,0.36	24/05Su	0.42,0.27,0.30	
	Odds	2.55,3.60,2.80,	cKelly 0.17,0.05,0.00	Dist	0.37,0.09,0.00	
Juventus	3-1	Napoli	0.33,0.29,0.40	23/05Sa	0.62,0.19,0.19	
	Odds	3.00,3.40,2.50,	cKelly 1.20,0.21,0.12	Dist	0.27,0.00,0.59	
Genoa	3-2	Inter	0.38,0.28,0.37	23/05Sa	0.36,0.34,0.31	
	Odds	2.63,3.60,2.70,	cKelly 0.07,0.24,0.03	Dist	0.31,0.08,0.00	
Napoli	3-2	Cesena	0.88,0.12,0.06	18/05Mo	0.60,0.28,0.13	
	Odds	1.14,8.50,17.00,	cKelly 0.00,0.91,0.42	Dist	1.00,0.10,0.00	
Fiorentina	3-0	Parma	0.83,0.14,0.08	18/05Mo	0.50,0.25,0.25	
	Odds	1.20,7.00,13.00,	cKelly 0.00,0.81,0.69	Dist	1.00,0.12,0.00	
Verona	2-1	Empoli	0.38,0.29,0.36	17/05Su	0.31,0.32,0.37	
	Odds	2.63,3.50,2.75,	cKelly 0.00,0.16,0.11	Dist	0.37,0.25,0.00	
Torino	2-0	Chievo	0.57,0.28,0.18	17/05Su	0.48,0.34,0.21	
	Odds	1.75,3.60,5.50,	cKelly 0.00,0.29,0.13	Dist	0.52,0.00,0.08	
Sassuolo	3-2	Milan	0.30,0.29,0.43	17/05Su	0.26,0.33,0.41	
	Odds	3.30,3.40,2.30,	cKelly 0.03,0.18,0.05	Dist	0.02,0.00,0.64	
Roma	2-1	Udinese	0.80,0.17,0.08	17/05Su	0.53,0.35,0.16	
	Odds	1.25,5.75,13.00,	cKelly 0.00,0.89,0.39	Dist	0.99,0.18,0.00	
Cagliari	0-1	Palermo	0.48,0.28,0.28	17/05Su	0.16,0.28,0.56	
	Odds	2.10,3.60,3.60,	cKelly 0.00,0.34,1.11	Dist	0.78,0.00,0.34	

Gain_cum for ital-b-14-15, Kelly, Aw-black



strategies that do not separate teams

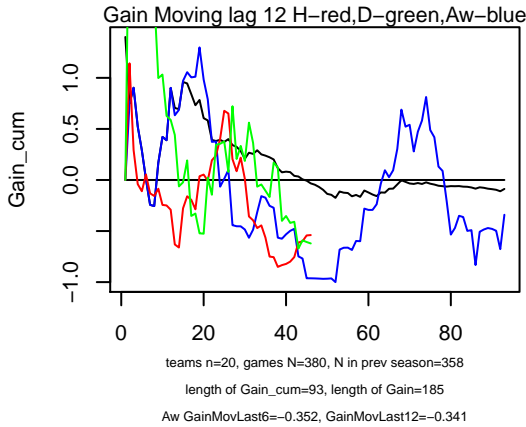
(csGain[[(N_1 + 1):N], 1])



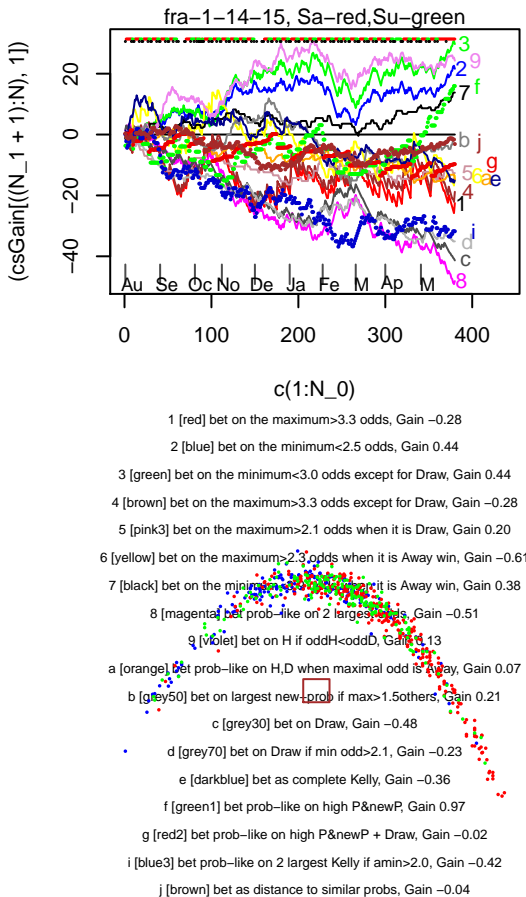
- 1 [red] bet on the maximum>3.3 odds, Gain 0.34
- 2 [blue] bet on the minimum<2.5 odds, Gain 0.09
- 3 [green] bet on the minimum<3.0 odds except for Draw, Gain 0.41
- 4 [brown] bet on the maximum>3.3 odds except for Draw, Gain 0.34
- 5 [pink3] bet on the maximum>2.1 odds when it is Draw, Gain 0.11
- 6 [yellow] bet on the maximum>2.3 odds when it is Away win, Gain -0.20
- 7 [black] bet on the minimum<3.9 odds when it is Away win, Gain 0.16
- 8 [magenta] bet prob-like on 2 largest odds, Gain -0.32
- 9 [violet] bet on H if oddH<oddD, Gain 0.17
- a [orange] bet prob-like on H,D when maximal odd is Away, Gain -0.07
- b [grey50] bet on largest new_prob if max>1.5 others, Gain -0.17
- c [grey50] bet on largest new_prob if max>1.5 others, Gain -0.11
- d [grey70] bet on Draw if min odds>2.1, Gain -0.06
- e [darkblue] bet as complete Kelly, Gain -0.50
- f [green1] bet prob-like on high P&newP, Gain -0.29
- g [red2] bet prob-like on high P&newP + Draw, Gain -0.27
- i [blue3] bet prob-like on 2 largest Kelly if amin>2.0, Gain -0.28
- j [brown] bet as distance to similar probs, Gain -0.11

	Team H, Team Aw,	Betfair probs,	Date,	Our probs	Kelly bets
	Half Full-Time Goals,	Betfair odds, complete Kelly,	Bet amount indexes of strategies		
Bari	Ternana	0.53,0.29,0.19,	10 Nov	0.50,0.25,0.25,	Bet, 0, 0, 0U
1.4	2.3	Odds ,1.88,3.50,5.20,cKelly--	0.05,0.04,0.19	Bet 0.67 239, 0.00 ,	0.68 14
		Dist bet 0.46,0.33,0.00			
Bologna	Brescia	0.71,0.34,0.43,	15 Nov	0.44,0.34,0.24,	Bet, 0, 0, 0
1.0	2.2	Odds ,1.41,2.92,2.30,cKelly--	0.51,0.88,0.82	Bet 0.67 239, 0.11 5, 0.00	
		Dist bet 0.57,0.31,0.00			
Carpi	Cittadella	0.72,0.34,0.43,	15 Nov	0.54,0.33,0.16,	Bet, 0, 0, 0
0.9	2.0	Odds ,1.39,2.94,2.34,cKelly--	0.68,0.76,0.57	Bet 0.67 239, 0.11 5, 0.00	
		Dist bet 0.58,0.35,0.00			
Vicenza	2-1 Frosinone	0.71,0.22,0.11	22/05Fr	0.27,0.30,0.43	
	Odds ,1.40,4.50,9.00,	cKelly 0.00,0.88,1.07		Dist 0.81,0.10,0.00	
Trapani	2-1 Pro Vercel	0.45,0.50,0.26	22/05Fr	0.35,0.39,0.29	
	Odds ,2.20,2.00,3.80,	cKelly 0.21,0.19,0.28		Dist 0.25,0.06,0.00	
Ternana	2-0 Varese	0.71,0.22,0.11	22/05Fr	0.40,0.24,0.35	
	Odds ,1.40,4.50,9.00,	cKelly 0.00,0.54,0.79		Dist 0.81,0.10,0.00	
Spezia	1-0 Bari	0.59,0.28,0.19	22/05Fr	0.37,0.32,0.31	
	Odds ,1.70,3.60,5.40,	cKelly 0.00,0.41,0.52		Dist 0.85,0.52,0.00	
Pescara	3-0 Livorno	0.42,0.31,0.31	22/05Fr	0.30,0.32,0.38	
	Odds ,2.38,3.20,3.20,	cKelly 0.00,0.15,0.33		Dist 0.73,0.00,0.07	
Latina	1-1 Modena	0.38,0.36,0.31	22/05Fr	0.36,0.33,0.31	
	Odds ,2.63,2.75,3.20,	cKelly 0.04,0.03,0.06		Dist 0.31,0.00,0.22	
Crotone	0-0 Virtus Ent	0.45,0.34,0.25	22/05Fr	0.44,0.28,0.28	
	Odds ,2.20,2.90,4.00,	cKelly 0.09,0.02,0.15		Dist 0.42,0.00,0.84	
Cittadella	0-2 Perugia	0.56,0.29,0.21	22/05Fr	0.17,0.38,0.52	
	Odds ,1.80,3.50,4.75,	cKelly 0.00,0.76,1.15		Dist 0.64,0.55,0.00	
Carpi	0-0 Catania	0.33,0.58,0.34	22/05Fr	0.43,0.33,0.24	
	Odds ,3.00,1.73,2.90,	cKelly 0.79,0.18,0.41		Dist 0.21,0.00,0.06	
Brescia	3-2 Avellino	0.49,0.29,0.26	22/05Fr	0.27,0.26,0.47	
	Odds ,2.05,3.40,3.80,	cKelly 0.05,0.25,0.81		Dist 0.19,0.05,0.00	
Bologna	1-0 Virtus Lan	0.77,0.20,0.08	22/05Fr	0.37,0.38,0.28	
	Odds ,1.30,5.00,13.00,	cKelly 0.00,1.14,0.70		Dist 0.90,0.04,0.00	
Virtus Lan	0-2 Spezia	0.33,0.33,0.38	16/05Sa	0.28,0.37,0.38	
	Odds ,3.00,3.00,2.63,	cKelly 0.00,0.16,0.07		Dist 0.52,0.00,0.02	
Virtus Ent	2-0 Latina	0.38,0.32,0.34	16/05Sa	0.32,0.34,0.35	
	Odds ,2.63,3.10,2.90,	cKelly 0.00,0.11,0.10		Dist 0.55,0.00,0.01	
Varese	2-1 Pescara	0.17,0.26,0.62	16/05Sa	0.20,0.33,0.49	
	Odds ,6.00,3.90,1.60,	cKelly 0.20,0.38,0.00		Dist 0.32,0.21,0.00	
Pro Vercel	1-1 Bologna	0.30,0.33,0.42	16/05Sa	0.29,0.39,0.35	
	Odds ,3.30,3.00,2.40,	cKelly 0.07,0.26,0.01		Dist 0.47,0.93,0.00	
Modena	1-2 Ternana	0.48,0.32,0.25	16/05Sa	0.42,0.31,0.27	
	Odds ,2.10,3.10,4.00,	cKelly 0.02,0.07,0.12		Dist 0.00,0.16,0.27	
Livorno	1-1 Vicenza	0.44,0.32,0.29	16/05Sa	0.33,0.29,0.38	
	Odds ,2.25,3.13,3.50,	cKelly 0.04,0.13,0.42		Dist 0.51,0.04,0.00	
Frosinone	3-1 Crotone	0.58,0.29,0.19	16/05Sa	0.50,0.23,0.27	
	Odds ,1.73,3.50,5.40,	cKelly 0.08,0.11,0.30		Dist 0.86,0.67,0.00	
Catania	2-3 Cittadella	0.58,0.28,0.19	16/05Sa	0.43,0.34,0.25	
	Odds ,1.73,3.60,5.20,	cKelly 0.00,0.38,0.27		Dist 0.86,0.55,0.00	
Bari	3-2 Brescia	0.36,0.31,0.38	16/05Sa	0.43,0.28,0.29	
	Odds ,2.80,3.20,2.63,	cKelly 0.36,0.09,0.04		Dist 0.50,0.16,0.00	
Avellino	1-1 Trapani	0.60,0.28,0.17	16/05Sa	0.34,0.31,0.35	
	Odds ,1.67,3.60,5.75,	cKelly 0.00,0.43,0.65		Dist 0.87,0.55,0.00	
Perugia	2-0 Carpi	0.57,0.29,0.19	15/05Fr	0.28,0.35,0.36	
	Odds ,1.75,3.40,5.40,	cKelly 0.00,0.57,0.68		Dist 0.50,0.58,0.00	
Crotone	1-0 Varese	0.75,0.21,0.09	10/05Su	0.54,0.24,0.22	
	Odds ,1.33,4.75,11.00,	cKelly 0.00,0.42,0.44		Dist 0.85,0.06,0.00	
Trapani	3-0 Modena	0.39,0.36,0.30	09/05Sa	0.40,0.38,0.26	
	Odds ,2.55,2.80,3.30,	cKelly 0.08,0.11,0.00		Dist 0.20,0.00,0.31	

Gain_cum for fra-1-14-15, Kelly, Aw-black



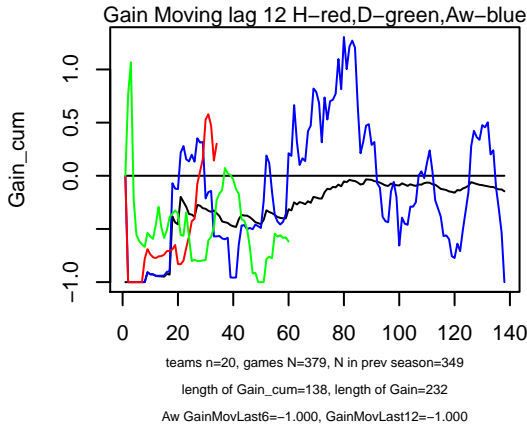
strategies that do not separate teams



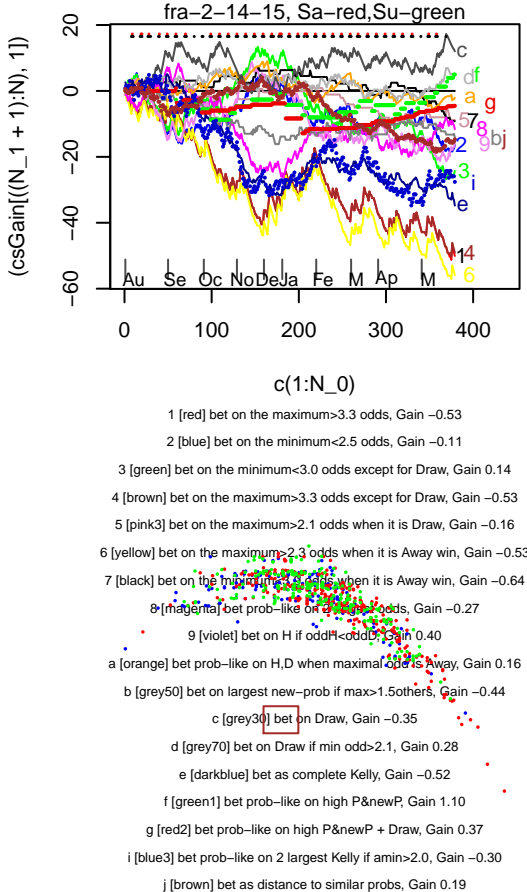
Team H, Team Aw, Betfair probs, Date, Our probs, Kelly bets
Half/Full-Time Goals, Betfair odds, complete Kelly, Bet amount/indexes of strategies

Toulouse	2-3	Nice	0.52,0.27,0.23	23/05Sa	0.41,0.29,0.30
Odds	1.91,3.70,4.30,	cKelly	0.00,0.19,0.27	Dist	0.89,0.61,0.00
St Etienne	2-1	Guingamp	0.80,0.17,0.06	23/05Sa	0.55,0.20,0.25
Odds	1.25,6.00,17.00,	cKelly	0.00,0.48,0.56	Dist	0.95,0.15,0.00
Rennes	0-1	Lyon	0.32,0.29,0.42	23/05Sa	0.17,0.28,0.55
Odds	3.10,3.50,2.40,	cKelly	0.01,0.13,0.66	Dist	0.41,0.03,0.00
Paris SG	3-2	Reims	0.88,0.11,0.04	23/05Sa	0.66,0.22,0.12
Odds	1.14,9.50,23.00,	cKelly	0.00,0.63,0.31	Dist	1.00,0.03,0.00
Metz	1-4	Lille	0.30,0.30,0.43	23/05Sa	0.15,0.26,0.58
Odds	3.30,3.30,2.30,	cKelly	0.04,0.13,0.77	Dist	0.21,0.00,0.02
Marseille	3-0	Bastia	0.82,0.14,0.07	23/05Sa	0.46,0.24,0.31
Odds	1.22,7.00,15.00,	cKelly	0.01,0.06,0.79	Dist	0.93,0.08,0.00
Lorient	0-1	Monaco	0.13,0.23,0.67	23/05Sa	0.18,0.35,0.51
Odds	7.50,4.40,1.50,	cKelly	0.24,0.54,0.00	Dist	0.08,0.00,0.29
Lens	1-0	Nantes	0.28,0.29,0.45	23/05Sa	0.21,0.28,0.51
Odds	2.05,3.50,4.00,	cKelly	0.01,0.06,0.32	Dist	0.36,0.00,0.26
Caen	3-2	Evian Thon	0.56,0.26,0.21	23/05Sa	0.45,0.15,0.40
Odds	1.80,3.80,4.80,	cKelly	0.17,0.13,0.66	Dist	0.92,0.37,0.00
Bordeaux	2-1	Montpellier	0.49,0.29,0.25	23/05Sa	0.47,0.20,0.33
Odds	2.05,3.50,4.00,	cKelly	0.12,0.02,0.29	Dist	0.51,0.58,0.00
Reims	1-0	Rennes	0.47,0.29,0.26	16/05Sa	0.31,0.28,0.42
Odds	2.15,3.40,3.80,	cKelly	0.02,0.18,0.59	Dist	0.34,0.10,0.00
Nice	2-1	Lens	0.62,0.26,0.15	16/05Sa	0.49,0.25,0.26
Odds	1.62,3.90,6.50,	cKelly	0.02,0.17,0.36	Dist	0.95,0.20,0.00
Nantes	1-1	Lorient	0.36,0.31,0.35	16/05Sa	0.37,0.32,0.30
Odds	2.75,3.20,2.88,	cKelly	0.07,0.08,0.00	Dist	0.00,0.03,0.17
Montpellier	1-2	Paris SG	0.12,0.22,0.69	16/05Sa	0.19,0.19,0.62
Odds	8.00,4.60,1.45,	cKelly	0.21,0.10,0.04	Dist	0.12,0.00,0.26
Monaco	2-0	Metz	0.82,0.17,0.06	16/05Sa	0.61,0.32,0.13
Odds	1.22,6.00,18.00,	cKelly	0.00,0.75,0.29	Dist	0.95,0.14,0.00
Lyon	1-1	Bordeaux	0.56,0.26,0.21	16/05Sa	0.48,0.22,0.30
Odds	1.80,3.80,4.80,	cKelly	0.06,0.09,0.32	Dist	0.92,0.26,0.00
Lille	0-4	Marseille	0.29,0.29,0.43	16/05Sa	0.37,0.24,0.39
Odds	3.40,3.40,2.30,	cKelly	0.29,0.04,0.07	Dist	0.29,0.00,0.14
Guingamp	2-1	Toulouse	0.38,0.30,0.34	16/05Sa	0.37,0.19,0.44
Odds	2.60,3.30,2.90,	cKelly	0.13,0.01,0.43	Dist	0.68,0.00,0.15
Evian Thon	1-2	St Etienne	0.22,0.29,0.52	16/05Sa	0.20,0.23,0.57
Odds	4.60,3.50,1.93,	cKelly	0.04,0.01,0.33	Dist	0.14,0.00,0.47
Bastia	1-1	Caen	0.42,0.29,0.31	16/05Sa	0.50,0.23,0.27
Odds	2.38,3.40,3.25,	cKelly	0.38,0.03,0.06	Dist	0.63,0.00,0.09
St Etienne	5-0	Nice	0.61,0.26,0.15	10/05Su	0.50,0.30,0.20
Odds	1.65,3.80,6.50,	cKelly	0.00,0.24,0.20	Dist	0.95,0.11,0.00
Marseille	2-1	Monaco	0.44,0.29,0.29	10/05Su	0.35,0.30,0.35
Odds	2.25,3.50,3.40,	cKelly	0.00,0.13,0.25	Dist	0.40,0.24,0.00
Lens	0-1	Montpellier	0.23,0.29,0.51	10/05Su	0.21,0.18,0.61
Odds	4.40,3.50,1.95,	cKelly	0.07,0.01,0.57	Dist	0.18,0.00,0.45
Toulouse	3-2	Lille	0.39,0.31,0.32	09/05Sa	0.24,0.32,0.45
Odds	2.55,3.20,3.13,	cKelly	0.00,0.17,0.55	Dist	0.77,0.65,0.00
Rennes	0-1	Bastia	0.48,0.30,0.24	09/05Sa	0.32,0.33,0.35
Odds	2.10,3.30,4.10,	cKelly	0.00,0.25,0.42	Dist	0.69,0.00,0.08
Metz	0-4	Lorient	0.37,0.30,0.35	09/05Sa	0.30,0.26,0.44
Odds	2.70,3.30,2.88,	cKelly	0.05,0.06,0.39	Dist	0.57,0.00,0.04
Evian Thon	2-3	Reims	0.45,0.29,0.28	09/05Sa	0.36,0.18,0.47
Odds	2.20,3.40,3.60,	cKelly	0.15,0.10,0.71	Dist	0.57,0.19,0.00

Gain_cum for fra-2-14-15, Kelly, Aw-black

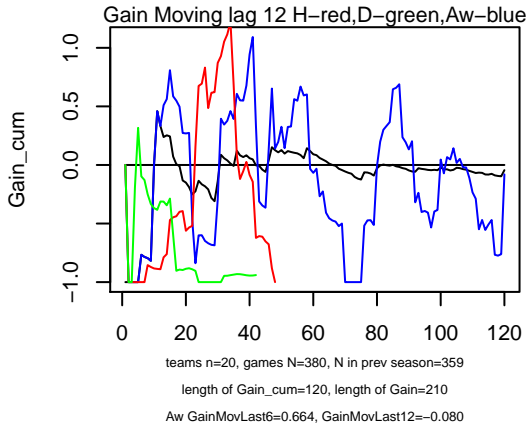


strategies that do not separate teams

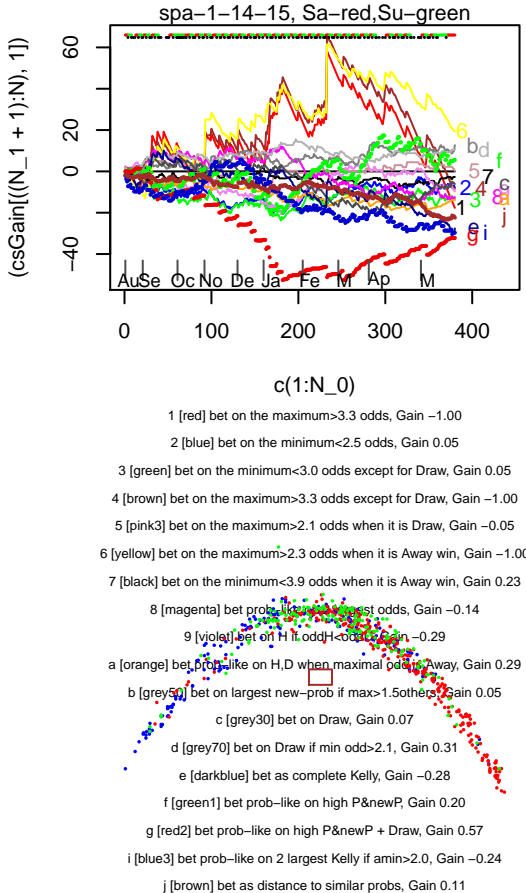


	Team H, Team Aw	Betfair probs	Date	Our probs	Kelly bets
	Half Full-Time Goals	Betfair odds, complete Kelly	Bet amount indexes of strategies		
Nancy	Creteil	0.53,0.27,0.20	10 Nov	0.43,0.32,0.24	Bet, 0, 0U, 0U
1.2	2.6	Odds ,1.88,3.70,4.90,cKelly=-0.00,0.26,0.18	Bet 0.83 39aj, 0.14 aj, 0.00		
		Dist bet 0.65,0.29,0.00			
Valencienn	2-1 Ajaccio	GF 0.48,0.30,0.26	22/05Fr	0.12,0.27,0.60	
	Odds ,2.10,3.30,3.80,	cKelly 0.04,0.41,1.30	Dist 0.79,0.00,0.16		
Troyes	4-1 Chateaurou	0.80,0.17,0.08	22/05Fr	0.66,0.28,0.09	
	Odds ,1.25,5.75,13.00,	cKelly 0.00,0.48,0.14	Dist 0.87,0.00,0.01		
Orleans	1-0 Sochaux	0.61,0.26,0.18	22/05Fr	0.26,0.36,0.41	
	Odds ,1.65,3.90,5.50,	cKelly 0.00,0.73,0.88	Dist 0.34,0.03,0.00		
Niort	0-3 Laval	0.59,0.26,0.19	22/05Fr	0.29,0.38,0.35	
	Odds ,1.70,3.90,5.20,	cKelly 0.00,0.70,0.67	Dist 0.40,0.09,0.00		
Le Havre	2-1 Auxerre	0.49,0.29,0.26	22/05Fr	0.41,0.35,0.26	
	Odds ,2.05,3.50,3.80,	cKelly 0.01,0.28,0.08	Dist 0.58,0.25,0.00		
Dijon	3-1 Nancy	0.35,0.32,0.37	22/05Fr	0.34,0.29,0.37	
	Odds ,2.88,3.10,2.70,	cKelly 0.03,0.01,0.04	Dist 0.12,0.29,0.00		
Creteil	1-4 Tours	0.47,0.29,0.29	22/05Fr	0.39,0.33,0.28	
	Odds ,2.15,3.50,3.40,	cKelly 0.02,0.22,0.08	Dist 0.50,0.17,0.00		
Clermont	1-0 Brest	0.36,0.32,0.36	22/05Fr	0.24,0.38,0.40	
	Odds ,2.75,3.13,2.80,	cKelly 0.00,0.29,0.25	Dist 0.05,0.43,0.00		
Angers	3-0 Nimes	0.77,0.20,0.08	22/05Fr	0.41,0.30,0.29	
	Odds ,1.30,5.00,13.00,	cKelly 0.00,0.88,0.70	Dist 0.87,0.00,0.01		
Ajaccio	2-1 Arles	0.69,0.23,0.17	22/05Fr	0.43,0.27,0.30	
	Odds ,1.44,4.30,9.00,	cKelly 0.00,0.50,0.63	Dist 0.77,0.05,0.00		
Tours	0-0 Dijon	0.35,0.31,0.38	15/05Fr	0.24,0.27,0.49	
	Odds ,2.88,3.20,2.63,	cKelly 0.04,0.10,0.51	Dist 0.00,0.74,0.06		
Sochaux	1-1 Valencienn	0.42,0.32,0.30	15/05Fr	0.43,0.27,0.30	
	Odds ,2.40,3.13,3.30,	cKelly 0.09,0.04,0.00	Dist 0.04,0.11,0.00		
Nimes	1-1 Ajaccio	0.26,0.30,0.48	15/05Fr	0.41,0.33,0.26	
	Odds ,3.80,3.30,2.10,	cKelly 0.62,0.33,0.00	Dist 0.00,0.16,0.04		
Nancy	0-0 Angers	0.53,0.29,0.21	15/05Fr	0.35,0.27,0.38	
	Odds ,1.87,3.40,4.80,	cKelly 0.04,0.23,0.61	Dist 0.56,0.32,0.00		
Laval	3-1 Clermont	0.41,0.32,0.31	15/05Fr	0.34,0.39,0.30	
	Odds ,2.45,3.10,3.25,	cKelly 0.01,0.28,0.07	Dist 0.29,0.32,0.00		
Chateaurou	0-0 Le Havre	0.29,0.31,0.43	15/05Fr	0.17,0.36,0.53	
	Odds ,3.40,3.20,2.30,	cKelly 0.00,0.24,0.47	Dist 0.30,0.22,0.00		
Brest	2-1 Troyes	0.40,0.32,0.31	15/05Fr	0.22,0.28,0.50	
	Odds ,2.50,3.10,3.20,	cKelly 0.05,0.19,0.78	Dist 0.51,0.35,0.00		
Auxerre	2-2 Creteil	0.45,0.31,0.28	15/05Fr	0.32,0.35,0.35	
	Odds ,2.20,3.20,3.60,	cKelly 0.00,0.27,0.34	Dist 0.96,0.34,0.00		
Arles	4-1 Orleans	0.25,0.31,0.48	15/05Fr	0.33,0.30,0.37	
	Odds ,4.00,3.20,2.10,	cKelly 0.32,0.12,0.02	Dist 0.00,0.14,0.19		
Ajaccio	GF 3-2 Niort	0.62,0.26,0.15	15/05Fr	0.50,0.30,0.20	
	Odds ,1.60,3.80,6.50,	cKelly 0.00,0.29,0.22	Dist 0.32,0.03,0.00		
Angers	0-0 Sochaux	0.55,0.30,0.20	11/05Mo	0.45,0.29,0.26	
	Odds ,1.83,3.30,5.00,	cKelly 0.03,0.12,0.24	Dist 0.93,0.72,0.00		
Creteil	1-1 Ajaccio	GF 0.29,0.33,0.43	09/05Sa	0.19,0.28,0.53	
	Odds ,3.50,3.00,2.30,	cKelly 0.04,0.09,0.51	Dist 0.49,0.00,0.54		
Valencienn	2-2 Laval	0.49,0.32,0.24	08/05Fr	0.20,0.33,0.49	
	Odds ,2.05,3.13,4.10,	cKelly 0.00,0.39,0.93	Dist 0.70,0.55,0.00		
Troyes	4-0 Arles	0.74,0.21,0.11	08/05Fr	0.68,0.19,0.13	
	Odds ,1.36,4.75,9.50,	cKelly 0.04,0.08,0.10	Dist 0.86,0.04,0.00		
Orleans	1-1 Nimes	0.64,0.26,0.15	08/05Fr	0.21,0.37,0.47	
	Odds ,1.57,3.80,6.50,	cKelly 0.00,0.91,1.10	Dist 0.31,0.00,0.03		
Niort	1-1 Auxerre	0.51,0.30,0.23	08/05Fr	0.38,0.36,0.28	
	Odds ,1.95,3.30,4.30,	cKelly 0.00,0.32,0.26	Dist 0.76,0.00,0.00		

Gain_cum for spa-1-14-15, Kelly, Aw-black



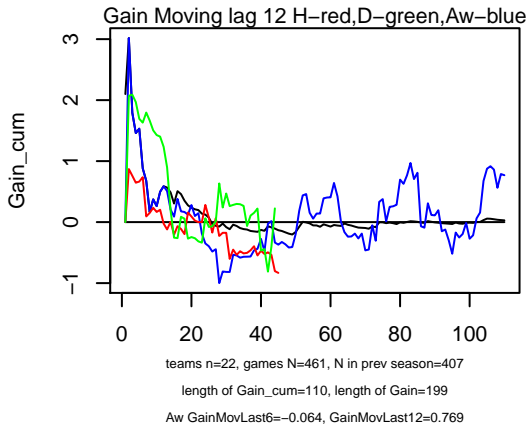
strategies that do not separate teams



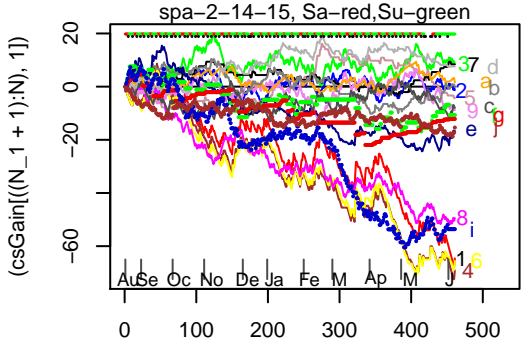
Team H, Team Aw, Betfair probs, Date, Our probs, Kelly bets
Half|Full-Time Goals, Betfair odds, complete Kelly, Bet amount|indexes of strategies

Vallecano	2-4	Sociedad	0.52,0.24,0.26	23/05Sa	0.29,0.19,0.52	
	Odds	1.91,4.10,3.90,	cKelly 0.08,0.24,1.00	Dist	0.70,0.00,0.02	
Real Madrid	7-3	Getafe	0.89,0.10,0.04	23/05Sa	0.72,0.17,0.11	
	Odds	1.12,10.50,23.00,	cKelly 0.00,0.48,0.28	Dist	0.99,0.00,0.07	
Malaga	2-3	Sevilla	0.31,0.26,0.50	23/05Sa	0.24,0.28,0.48	
	Odds	3.20,3.90,2.00,	cKelly 0.02,0.15,0.11	Dist	0.38,0.04,0.00	
Levante	0-0	Elche	0.49,0.28,0.26	23/05Sa	0.46,0.20,0.33	
	Odds	2.05,3.60,3.90,	cKelly 0.10,0.03,0.29	Dist	0.89,0.00,0.16	
Granada	0-0	Ath Madrid	0.29,0.40,0.43	23/05Sa	0.10,0.29,0.65	
	Odds	3.50,2.50,2.30,	cKelly 0.11,0.21,1.14	Dist	0.00,0.03,0.12	
Eibar	3-0	Cordoba	0.74,0.19,0.10	23/05Sa	0.44,0.20,0.35	
	Odds	1.36,5.20,10.00,	cKelly 0.00,0.45,0.79	Dist	0.89,0.22,0.00	
Celta	3-2	Espanol	0.59,0.24,0.20	23/05Sa	0.34,0.27,0.39	
	Odds	1.70,4.20,5.00,	cKelly 0.00,0.37,0.73	Dist	0.69,0.00,0.04	
Barcelona	2-2	La Coruna	0.78,0.15,0.10	23/05Sa	0.77,0.15,0.08	
	Odds	1.29,6.50,10.50,	cKelly 0.03,0.01,0.00	Dist	1.00,0.10,0.00	
Ath Bilbao	4-0	Villarreal	0.57,0.25,0.20	23/05Sa	0.38,0.21,0.41	
	Odds	1.75,4.00,5.00,	cKelly 0.06,0.22,0.72	Dist	0.81,0.15,0.00	
Almeria	2-3	Valencia	0.20,0.22,0.60	23/05Sa	0.10,0.23,0.67	
	Odds	5.00,4.50,1.67,	cKelly 0.00,0.08,0.48	Dist	0.21,0.00,0.13	
Villarreal	2-1	Malaga	0.53,0.26,0.24	17/05Su	0.40,0.21,0.38	
	Odds	1.90,3.80,4.20,	cKelly 0.07,0.14,0.54	Dist	0.59,0.00,0.13	
Valencia	1-1	Celta	0.62,0.23,0.19	17/05Su	0.59,0.23,0.18	
	Odds	1.62,4.40,5.40,	cKelly 0.02,0.04,0.02	Dist	0.79,0.00,0.05	
Sociedad	0-3	Granada	0.44,0.29,0.29	17/05Su	0.51,0.33,0.19	
	Odds	2.25,3.50,3.40,	cKelly 0.35,0.20,0.00	Dist	0.54,0.00,0.22	
Sevilla	2-1	Almeria	0.78,0.16,0.09	17/05Su	0.64,0.28,0.11	
	Odds	1.29,6.25,11.00,	cKelly 0.00,0.48,0.15	Dist	1.00,0.10,0.00	
La Coruna	2-0	Levante	0.56,0.26,0.20	17/05Su	0.32,0.26,0.43	
	Odds	1.80,3.80,5.00,	cKelly 0.01,0.28,0.78	Dist	0.66,0.00,0.37	
Getafe	1-1	Eibar	0.44,0.31,0.27	17/05Su	0.52,0.18,0.30	
	Odds	2.25,3.20,3.70,	cKelly 0.46,0.00,0.19	Dist	0.76,0.00,0.22	
Espanol	1-4	Real Madrid	0.16,0.21,0.65	17/05Su	0.14,0.18,0.68	
	Odds	6.25,4.75,1.53,	cKelly 0.01,0.01,0.21	Dist	0.19,0.00,0.20	
Elche	2-3	Ath Bilbao	0.26,0.29,0.47	17/05Su	0.25,0.22,0.53	
	Odds	3.80,3.40,2.15,	cKelly 0.05,0.01,0.34	Dist	0.05,0.43,0.00	
Cordoba	1-2	Vallecano	0.22,0.24,0.57	17/05Su	0.22,0.18,0.60	
	Odds	4.60,4.20,1.75,	cKelly 0.03,0.00,0.22	Dist	0.16,0.00,0.03	
Ath Madrid	0-1	Barcelona	0.21,0.26,0.56	17/05Su	0.32,0.11,0.56	
	Odds	4.80,3.90,1.80,	cKelly 0.37,0.00,0.25	Dist	0.09,0.02,0.00	
Vallecano	2-0	Getafe	0.51,0.27,0.25	11/05Mo	0.46,0.16,0.39	
	Odds	1.98,3.75,4.00,	cKelly 0.15,0.05,0.49	Dist	0.35,0.13,0.00	
Villarreal	1-0	Elche	0.74,0.19,0.10	10/05Su	0.58,0.16,0.26	
	Odds	1.36,5.20,10.00,	cKelly 0.00,0.23,0.48	Dist	0.89,0.00,0.00	
Levante	2-2	Ath Madrid	0.12,0.24,0.65	10/05Su	0.12,0.19,0.69	
	Odds	8.00,4.10,1.53,	cKelly 0.02,0.00,0.30	Dist	0.00,0.00,0.33	
Celta	1-1	Sevilla	0.36,0.26,0.41	10/05Su	0.17,0.27,0.56	
	Odds	2.80,3.80,2.45,	cKelly 0.00,0.16,0.75	Dist	0.40,0.00,0.01	
Almeria	1-2	Malaga	0.37,0.30,0.36	10/05Su	0.20,0.27,0.53	
	Odds	2.70,3.30,2.80,	cKelly 0.03,0.17,0.77	Dist	0.57,0.00,0.78	
Real Madrid	2-2	Valencia	0.69,0.19,0.14	09/05Sa	0.55,0.14,0.31	
	Odds	1.44,5.25,7.00,	cKelly 0.09,0.18,0.53	Dist	0.87,0.00,0.04	
Granada	2-0	Cordoba	0.69,0.22,0.12	09/05Sa	0.46,0.34,0.20	
	Odds	1.45,4.60,8.50,	cKelly 0.00,0.62,0.36	Dist	0.89,0.00,0.19	

Gain_cum for spa-2-14-15, Kelly, Aw-black



strategies that do not separate teams



c(1:N_0)

1 [red] bet on the maximum>3.3 odds, Gain -0.61

2 [blue] bet on the minimum<2.5 odds, Gain -0.14

3 [green] bet on the minimum<3.0 odds except for Draw, Gain -0.14

4 [brown] bet on the maximum>3.3 odds except for Draw, Gain -0.61

5 [pink3] bet on the maximum>2.1 odds when it is Draw, Gain -1.00

6 [yellow] bet on the maximum>2.3 odds when it is Away win, Gain -0.26

7 [black] bet on the minimum<3.3 odds when it is Away win, Gain 0.79

8 [magenta] bet prob-like on H,D if max odds, Gain 0.09

9 [violet] bet on H if odd > 3.3 odds, Gain -0.21

a [orange] bet prob-like on H,D when maximal odds is Away, Gain -0.08

b [grey50] bet on largest new-prob if max>1.5 others, Gain 0.33

c [grey30] bet on Draw, Gain 0.19

d [grey70] bet on Draw if min odds>2.1, Gain -0.43

e [darkblue] bet as complete Kelly, Gain 0.34

f [green1] bet prob-like on high P&newP, Gain 0.25

g [red2] bet prob-like on high P&newP + Draw, Gain 0.45

i [blue3] bet prob-like on 2 largest Kelly if amin>2.0, Gain -0.29

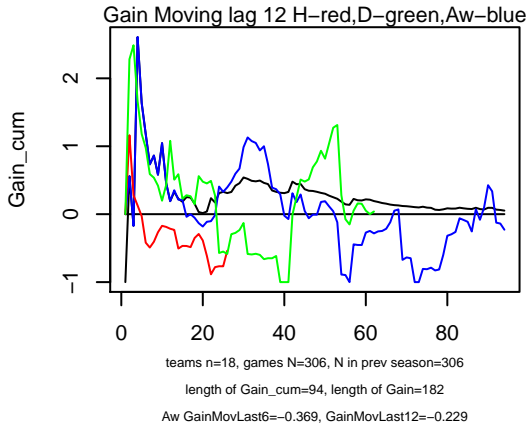
j [brown] bet as distance to similar probs, Gain 0.22

Team H, Team Aw, Betfair probs, Date, Our probs, Kelly bets

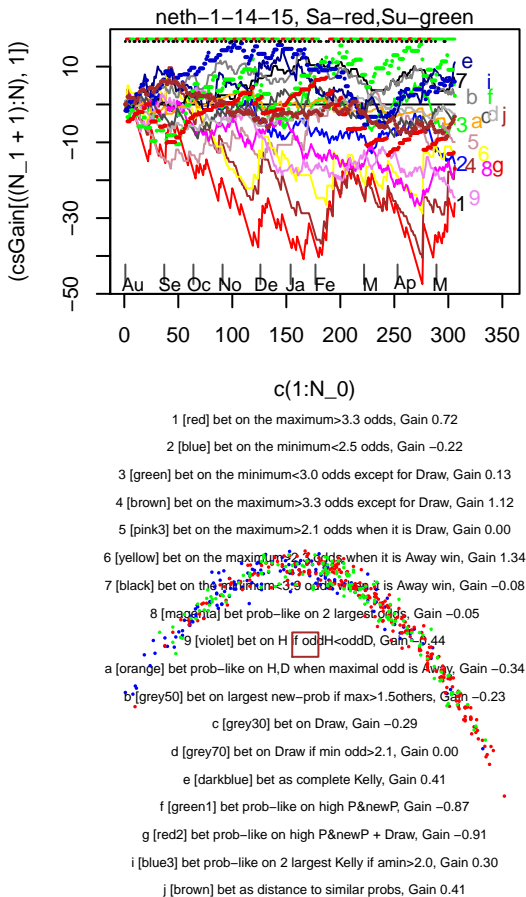
Half|Full-Time Goals, Betfair odds, complete Kelly, Bet amount|indexes of strategies

Alaves	_Sp	Gijon	,0.61,0.54,0.55,	15 Nov	0.24,0.29,0.47,	Bet,	0,	0,	0
0.9		2.0	Odds ,1.63,1.86,1.81,cKelly+,0.89,1.24,1.65		Bet 0.36 ej,	0.73 8cej,	0.99 8be		
			Dist bet 0.28,0.03,0.00						
Leganes	_Girona	,0.94,0.80,0.94,	15 Nov	0.30,0.30,0.40,	Bet,	0,	0,	0	
1.1		2.1	Odds ,1.06,1.25,1.06,cKelly+,22.91,33.19,25.67		Bet 8.00 8ej,	11.72 8ce,	9.53 7ej		
			Dist bet 0.20,0.00,0.12						
Barcelona	_Numancia	,0.94,0.80,0.94,	15 Nov	0.19,0.31,0.50,	Bet,	0,	0,	0	
1.2		2.8	Odds ,1.06,1.25,1.06,cKelly+,19.40,33.34,29.21		Bet 6.81 8ej,	11.77 8ce,	10.73 7ej		
			Dist bet 0.20,0.00,0.12						
Las Palmas	_Mirandes	,0.88,0.80,0.94,	15 Nov	0.46,0.29,0.26,	Bet,	0,	0,	0	
1.0		2.6	Odds ,1.14,1.25,1.06,cKelly+,25.73,24.84,11.26		Bet 8.94 8ej,	8.89 8ce,	4.64 7ej		
			Dist bet 0.19,0.00,0.13						
Sabadell	_Valladolid	,0.53,0.52,0.64,	15 Nov	0.24,0.29,0.48,	Bet,	0,	0,	0	
1.6		3.1	Odds ,1.89,1.91,1.56,cKelly+,1.01,1.13,1.44		Bet 0.50 8ej,	0.68 8cej,	1.61 7be		
			Dist bet 0.27,0.03,0.00						
Osasuna	_Ponferradi	,0.63,0.53,0.54,	15 Nov	0.27,0.30,0.42,	Bet,	0,	0,	0	
1.1		2.1	Odds ,1.59,1.89,1.86,cKelly+,0.91,1.28,1.54		Bet 0.37 ej,	0.74 8cej,	0.62 8e		
			Dist bet 0.29,0.04,0.00						
Mallorca	_Alcorcon	,0.69,0.51,0.47,	15 Nov	0.30,0.30,0.39,	Bet,	0,	0,	0	
1.4		2.3	Odds ,1.44,1.97,2.14,cKelly+,0.76,1.44,1.58		Bet 0.33 ej,	0.79 8cej,	0.62 8e		
			Dist bet 0.32,0.05,0.00						
Lugo	_Santander	,0.94,0.80,0.94,	16 Nov	0.53,0.26,0.21,	Bet,	0,	0,	0	
1.2		2.8	Odds ,1.06,1.25,1.06,cKelly+,29.47,32.07,18.60		Bet 10.22 8ej,	11.34 8ce,	7.13 7ej		
			Dist bet 0.20,0.00,0.12						
Zaragoza	_Betis	,0.65,0.52,0.51,	16 Nov	0.24,0.27,0.49,	Bet,	0,	0,	0	
1.1		2.2	Odds ,1.53,1.94,1.95,cKelly+,0.72,1.28,1.74		Bet 0.31 ej,	0.74 8cej,	1.02 8be		
			Dist bet 0.31,0.05,0.00						
Lagostera	_Tenerife	,0.94,0.80,0.94,	16 Nov	0.33,0.34,0.33,	Bet,	0,	0,	0	
1.2		2.2	Odds ,1.06,1.25,1.06,cKelly+,24.63,34.29,24.52		Bet 8.58 8ej,	12.10 8ce,	9.14 7ej		
			Dist bet 0.20,0.00,0.12						
Recreativo	_Albacete	,0.94,0.80,0.94,	16 Nov	0.21,0.29,0.51,	Bet,	0,	0,	0	
1.2		2.5	Odds ,1.06,1.25,1.06,cKelly+,19.39,32.88,29.01		Bet 6.80 8ej,	11.62 8ce,	10.66 7ej		
			Dist bet 0.20,0.00,0.12						
Valladolid	2-4	Lagostera	0.54,0.29,0.23	07/06Su	0.47,0.26,0.27				
			Odds ,1.85,3.50,4.30,	cKelly 0.04,0.08,0.18	Dist 0.23,0.00,0.63				
Recreativo	2-0	Barcelona	0.51,0.26,0.29	07/06Su	0.36,0.28,0.36				
			Odds ,1.95,3.80,3.50,	cKelly 0.00,0.21,0.40	Dist 0.58,0.00,0.32				
Ponferradi	1-1	Alcorcon	0.69,0.23,0.14	07/06Su	0.39,0.37,0.28				
			Odds ,1.45,4.30,7.00,	cKelly 0.00,0.81,0.59	Dist 0.71,0.60,0.00				
Numancia	3-3	Tenerife	0.51,0.29,0.26	07/06Su	0.33,0.36,0.33				
			Odds ,1.95,3.50,3.80,	cKelly 0.00,0.43,0.37	Dist 0.00,0.20,0.73				
Mirandes	2-0	Mallorca	0.53,0.29,0.24	07/06Su	0.45,0.26,0.29				
			Odds ,1.87,3.50,4.20,	cKelly 0.03,0.11,0.23	Dist 0.16,0.00,0.72				
Leganes	2-2	Zaragoza	0.17,0.28,0.61	07/06Su	0.35,0.30,0.35				
			Odds ,5.75,3.60,1.65,	cKelly 0.66,0.41,0.00	Dist 0.00,0.08,0.53				
Las Palmas	3-2	Alaves	0.57,0.27,0.22	07/06Su	0.45,0.26,0.29				
			Odds ,1.75,3.70,4.50,	cKelly 0.01,0.16,0.32	Dist 0.71,0.00,0.29				
Girona	1-1	Lugo	0.78,0.19,0.09	07/06Su	0.40,0.31,0.29				
			Odds ,1.29,5.20,11.00,	cKelly 0.00,0.91,0.73	Dist 0.97,0.30,0.00				
Betis	0-3	Sp Gijon	0.26,0.29,0.52	07/06Su	0.42,0.27,0.31				
			Odds ,3.90,3.50,1.93,	cKelly 0.69,0.25,0.02	Dist 0.01,0.00,0.12				
Albacete	0-1	Santander	0.28,0.28,0.57	07/06Su	0.54,0.24,0.22				
			Odds ,3.60,3.60,2.00,	cKelly 1.07,0.31,0.06	Dist 0.01,0.00,0.06				
Zaragoza	0-2	Las Palmas	0.41,0.29,0.36	31/05Su	0.27,0.30,0.43				
			Odds ,2.45,3.40,2.80,	cKelly 0.00,0.14,0.40	Dist 0.35,0.11,0.00				
Tenerife	2-0	Betis	0.55,0.28,0.23	31/05Su	0.19,0.28,0.53				
			Odds ,1.83,3.60,4.33,	cKelly 0.00,0.45,1.14	Dist 0.20,0.00,0.14				
Sp Gijon	2-0	Sabadell	0.80,0.19,0.08	31/05Su	0.49,0.36,0.17				
			Odds ,1.25,5.40,12.00,	cKelly 0.00,0.99,0.45	Dist 0.93,0.35,0.00				
Santander	0-1	Ponferradi	0.50,0.30,0.26	31/05Su	0.20,0.26,0.54				
			Odds ,2.00,3.30,3.80,	cKelly 0.07,0.36,1.10	Dist 0.64,0.30,0.00				
Osasuna	2-0	Recreativo	0.61,0.27,0.19	31/05Su	0.44,0.32,0.24				
			Odds ,1.65,3.70,5.40,	cKelly 0.00,0.36,0.28	Dist 0.76,0.00,0.10				
Mallorca	0-1	Girona	0.17,0.24,0.65	31/05Su	0.24,0.25,0.51				
			Odds ,6.00,4.10,1.53,	cKelly 0.31,0.20,0.00	Dist 0.14,0.00,0.17				

Gain_cum for neth-1-14-15, Kelly, Aw-black

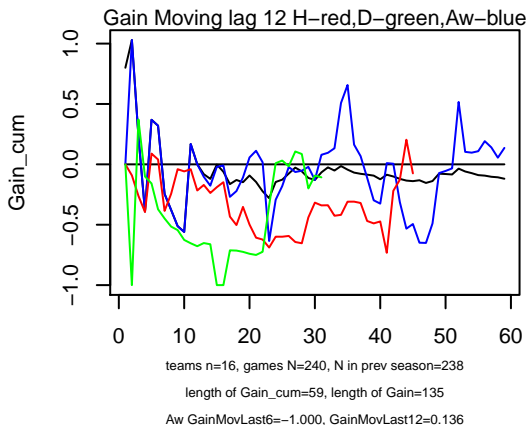


strategies that do not separate teams

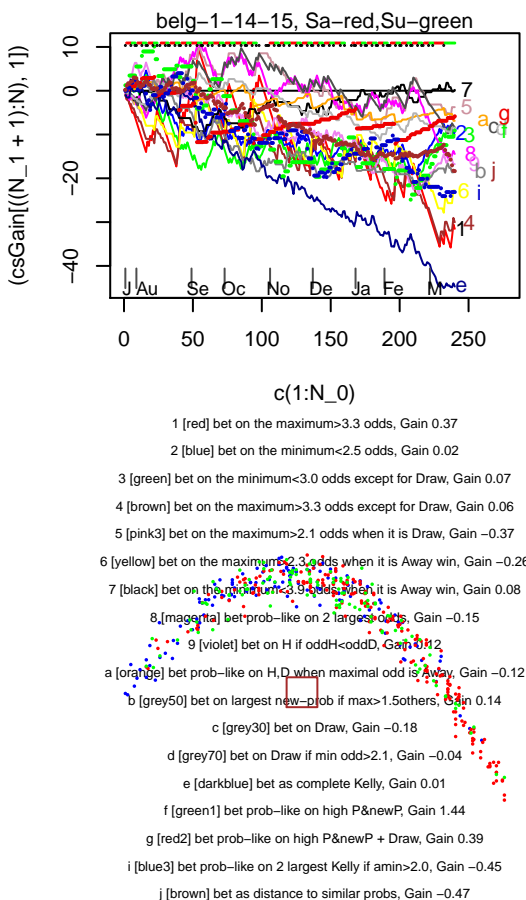


	Team H, Team Aw,	Betfair probs,	Date,	Our probs	Kelly bets
Half Full-Time Goals,	Betfair odds,	complete Kelly,	Bet amount indexes of strategies		
Zwolle	3-0 Feyenoord	0.22,0.25,0.60	17/05Su	0.27,0.22,0.51	
	Odds 4.60,4.00,1.67,	cKelly 0.24,0.11,0.04	Dist 0.27,0.00,0.14		
Vitesse	3-3 Utrecht	0.78,0.15,0.11	17/05Su	0.47,0.29,0.23	
	Odds 1.29,6.50,9.00,	cKelly 0.00,0.74,0.57	Dist 0.87,0.26,0.00		
NAC Breda	4-5 Groningen	0.36,0.28,0.40	17/05Su	0.15,0.35,0.56	
	Odds 2.75,3.60,2.50,	cKelly 0.00,0.38,0.81	Dist 0.86,0.00,0.88		
Heracles	1-0 Go Ahead E	0.60,0.23,0.21	17/05Su	0.49,0.18,0.34	
	Odds 1.67,4.30,4.75,	cKelly 0.09,0.13,0.47	Dist 0.87,0.39,0.00		
Heerenveen	1-3 Twente	0.38,0.26,0.39	17/05Su	0.45,0.26,0.28	
	Odds 2.60,3.80,2.55,	cKelly 0.36,0.10,0.00	Dist 0.00,0.06,0.54		
Excelsior	1-4 AZ Alkmaar	0.30,0.25,0.49	17/05Su	0.25,0.28,0.47	
	Odds 3.30,4.00,2.05,	cKelly 0.02,0.12,0.07	Dist 0.17,0.00,0.25		
Dordrecht	2-1 Ajax	0.10,0.15,0.78	17/05Su	0.06,0.23,0.74	
	Odds 10.00,6.50,1.29,	cKelly 0.03,0.23,0.06	Dist 0.28,0.00,0.21		
Den Haag	2-3 PSV Eindhoven	0.16,0.21,0.67	17/05Su	0.17,0.16,0.67	
	Odds 6.25,4.80,1.50,	cKelly 0.04,0.00,0.11	Dist 0.18,0.00,0.30		
Cambuur	1-2 Willem II	0.44,0.27,0.33	17/05Su	0.35,0.23,0.42	
	Odds 2.25,3.75,3.00,	cKelly 0.04,0.09,0.41	Dist 0.31,0.00,0.45		
Feyenoord	1-4 Vitesse	0.56,0.26,0.23	11/05Mo	0.46,0.27,0.28	
	Odds 1.80,3.90,4.33,	cKelly 0.00,0.14,0.22	Dist 0.66,0.96,0.00		
Willem II	1-0 Den Haag	0.47,0.27,0.30	10/05Su	0.30,0.32,0.38	
	Odds 2.15,3.75,3.30,	cKelly 0.00,0.30,0.42	Dist 0.50,0.00,0.29		
Utrecht	2-2 Excelsior	0.47,0.27,0.30	10/05Su	0.41,0.27,0.32	
	Odds 2.15,3.70,3.30,	cKelly 0.00,0.06,0.11	Dist 0.64,0.00,0.17		
Twente	3-0 Dordrecht	0.83,0.14,0.07	10/05Su	0.59,0.26,0.15	
	Odds 1.20,7.00,15.00,	cKelly 0.00,0.67,0.37	Dist 1.00,0.06,0.00		
PSV Eindhoven	2-0 Heracles	0.85,0.13,0.07	10/05Su	0.78,0.12,0.10	
	Odds 1.18,7.50,15.00,	cKelly 0.00,0.12,0.13	Dist 1.00,0.13,0.00		
Groningen	0-1 Zwolle	0.47,0.27,0.31	10/05Su	0.33,0.34,0.33	
	Odds 2.15,3.75,3.25,	cKelly 0.00,0.33,0.22	Dist 0.50,0.00,0.29		
Go Ahead E	1-1 Heerenveen	0.35,0.27,0.42	10/05Su	0.15,0.19,0.66	
	Odds 2.88,3.75,2.38,	cKelly 0.07,0.16,1.15	Dist 0.00,0.09,0.34		
AZ Alkmaar	3-2 NAC Breda	0.62,0.23,0.18	10/05Su	0.54,0.27,0.20	
	Odds 1.60,4.30,5.50,	cKelly 0.00,0.20,0.12	Dist 0.85,0.51,0.00		
Ajax	3-0 Cambuur	0.69,0.21,0.14	10/05Su	0.64,0.17,0.19	
	Odds 1.45,4.80,7.00,	cKelly 0.06,0.07,0.17	Dist 0.78,0.00,0.12		
Zwolle	1-1 Ajax	0.32,0.28,0.45	26/04Su	0.23,0.22,0.55	
	Odds 3.10,3.60,2.20,	cKelly 0.05,0.07,0.53	Dist 0.71,0.00,0.13		
Twente	0-2 AZ Alkmaar	0.58,0.24,0.23	26/04Su	0.39,0.28,0.33	
	Odds 1.73,4.10,4.40,	cKelly 0.00,0.33,0.47	Dist 0.61,0.15,0.00		
Groningen	1-1 Feyenoord	0.23,0.25,0.57	26/04Su	0.24,0.28,0.47	
	Odds 4.40,4.00,1.75,	cKelly 0.14,0.20,0.00	Dist 0.39,0.00,0.25		
Dordrecht	0-0 Cambuur	0.23,0.25,0.57	26/04Su	0.22,0.16,0.62	
	Odds 4.40,4.00,1.75,	cKelly 0.00,0.01,0.35	Dist 0.39,0.00,0.25		
NAC Breda	1-3 Heracles	0.44,0.27,0.33	25/04Sa	0.34,0.27,0.39	
	Odds 2.25,3.70,3.00,	cKelly 0.00,0.10,0.31	Dist 0.51,0.00,0.40		
Heerenveen	1-1 Willem II	0.56,0.25,0.24	25/04Sa	0.46,0.28,0.26	
	Odds 1.80,4.00,4.10,	cKelly 0.00,0.18,0.15	Dist 0.59,0.54,0.00		
Go Ahead E	0-2 Utrecht	0.40,0.28,0.37	25/04Sa	0.30,0.18,0.52	
	Odds 2.50,3.60,2.70,	cKelly 0.11,0.09,0.70	Dist 0.00,0.40,0.43		
Excelsior	2-3 PSV Eindhoven	0.17,0.22,0.67	25/04Sa	0.11,0.18,0.71	
	Odds 6.00,4.60,1.50,	cKelly 0.02,0.03,0.41	Dist 0.26,0.00,0.36		
Den Haag	1-0 Vitesse	0.29,0.26,0.50	24/04Fr	0.29,0.34,0.37	
	Odds 3.50,3.80,2.00,	cKelly 0.15,0.35,0.00	Dist 0.53,0.00,0.09		

Gain_cum for belg-1-14-15, Kelly, Aw-black



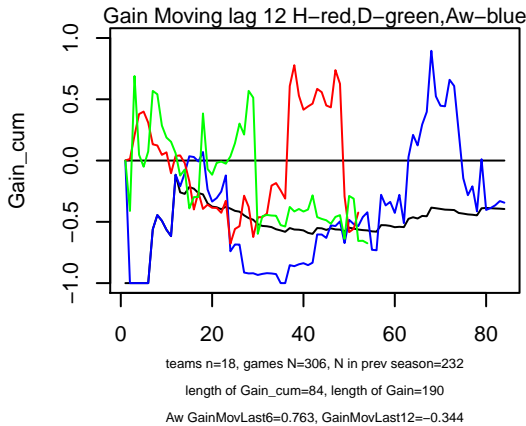
strategies that do not separate teams



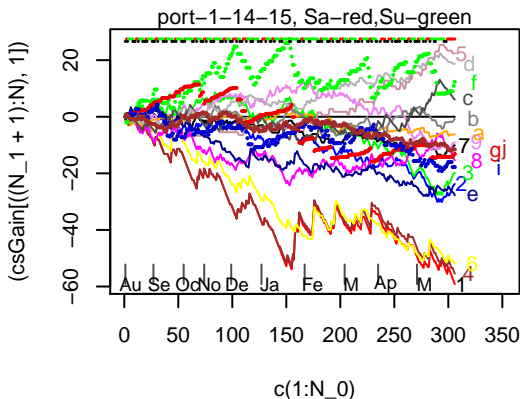
Team H, Team Aw, Betfair probs, Date, Our probs, Kelly bets
Half|Full-Time Goals, Betfair odds, complete Kelly, Bet amount|indexes of strategies

Westerlo	1-3 Club Brugg	0.13,0.21,0.71	15/03Su	0.13,0.34,0.54
	Odds	7.50,4.75,1.40,	cKelly	0.16,0.58,0.00
			Dist	0.18,0.00,0.23
Waregem	1-4 Oostende	0.53,0.26,0.26	15/03Su	0.40,0.26,0.34
	Odds	1.90,3.80,3.90,	cKelly	0.00,0.14,0.37
			Dist	0.78,0.45,0.00
Waasland-B	0-0 Lokeren	0.35,0.29,0.41	15/03Su	0.24,0.30,0.46
	Odds	2.88,3.40,2.45,	cKelly	0.00,0.11,0.32
			Dist	0.97,0.00,0.33
Standard	1-0 Genk	0.48,0.28,0.29	15/03Su	0.39,0.23,0.37
	Odds	2.10,3.60,3.40,	cKelly	0.06,0.09,0.35
			Dist	0.00,0.75,0.23
Lierse	0-0 Kortrijk	0.22,0.26,0.57	15/03Su	0.26,0.25,0.49
	Odds	4.50,3.90,1.75,	cKelly	0.20,0.10,0.02
			Dist	0.23,0.00,0.12
Charleroi	2-0 Mouscron-P	0.62,0.26,0.17	15/03Su	0.50,0.21,0.30
	Odds	1.62,3.90,5.75,	cKelly	0.08,0.16,0.43
			Dist	0.67,0.29,0.00
Cercle Bru	2-3 Mechelen	0.36,0.29,0.40	15/03Su	0.23,0.24,0.53
	Odds	2.80,3.40,2.50,	cKelly	0.06,0.11,0.65
			Dist	0.98,0.00,0.02
Anderlecht	1-2 Gent	0.54,0.27,0.24	15/03Su	0.46,0.29,0.26
	Odds	1.85,3.70,4.20,	cKelly	0.03,0.15,0.14
			Dist	0.72,0.53,0.00
Oostende	4-3 Waasland-B	0.52,0.29,0.24	07/03Sa	0.42,0.25,0.33
	Odds	1.91,3.50,4.20,	cKelly	0.06,0.12,0.38
			Dist	0.72,0.00,0.16
Mouscron-P	1-0 Westerlo	0.45,0.29,0.30	07/03Sa	0.32,0.27,0.41
	Odds	2.20,3.40,3.30,	cKelly	0.03,0.14,0.47
			Dist	0.48,0.00,0.29
Mechelen	1-0 Standard	0.28,0.29,0.49	07/03Sa	0.35,0.27,0.38
	Odds	3.60,3.50,2.05,	cKelly	0.33,0.12,0.02
			Dist	0.11,0.00,0.23
Lokeren	1-2 Anderlecht	0.26,0.29,0.50	07/03Sa	0.25,0.34,0.41
	Odds	3.80,3.50,2.00,	cKelly	0.10,0.27,0.02
			Dist	0.00,0.01,0.12
Kortrijk	1-0 Cercle Bru	0.71,0.21,0.12	07/03Sa	0.55,0.15,0.29
	Odds	1.40,4.75,8.00,	cKelly	0.11,0.23,0.54
			Dist	0.89,0.20,0.00
Gent	2-1 Lierse	0.78,0.17,0.09	07/03Sa	0.51,0.28,0.21
	Odds	1.29,5.75,11.00,	cKelly	0.00,0.67,0.48
			Dist	0.88,0.00,0.00
Genk	3-2 Waregem	0.55,0.27,0.24	07/03Sa	0.40,0.28,0.32
	Odds	1.83,3.75,4.20,	cKelly	0.00,0.20,0.36
			Dist	0.73,0.49,0.00
Club Brugg	1-0 Charleroi	0.65,0.24,0.15	07/03Sa	0.52,0.28,0.20
	Odds	1.53,4.20,6.50,	cKelly	0.00,0.28,0.23
			Dist	0.59,0.00,0.22
Waasland-B	0-1 Gent	0.19,0.25,0.61	01/03Su	0.29,0.26,0.45
	Odds	5.20,4.00,1.65,	cKelly	0.39,0.24,0.00
			Dist	0.20,0.00,0.12
Club Brugg	3-0 Mouscron-P	0.85,0.14,0.06	01/03Su	0.59,0.24,0.17
	Odds	1.18,7.00,17.00,	cKelly	0.00,0.70,0.42
			Dist	1.00,0.10,0.00
Anderlecht	2-0 Kortrijk	0.62,0.24,0.19	01/03Su	0.52,0.26,0.23
	Odds	1.62,4.10,5.40,	cKelly	0.00,0.17,0.20
			Dist	0.49,0.05,0.00
Westerlo	3-0 Oostende	0.42,0.29,0.33	28/02Sa	0.35,0.32,0.33
	Odds	2.38,3.40,3.00,	cKelly	0.01,0.16,0.08
			Dist	0.52,0.00,0.06
Waregem	2-3 Mechelen	0.49,0.28,0.29	28/02Sa	0.33,0.31,0.36
	Odds	2.05,3.60,3.50,	cKelly	0.00,0.26,0.39
			Dist	0.11,0.74,0.00
Lierse	0-2 Genk	0.28,0.29,0.49	28/02Sa	0.20,0.31,0.49
	Odds	3.60,3.50,2.05,	cKelly	0.00,0.13,0.10
			Dist	0.11,0.00,0.23
Charleroi	1-0 Lokeren	0.41,0.30,0.33	28/02Sa	0.32,0.31,0.38
	Odds	2.45,3.30,3.00,	cKelly	0.00,0.10,0.24
			Dist	0.13,0.00,0.02
Standard	1-0 Cercle Bru	0.78,0.18,0.09	27/02Fr	0.59,0.15,0.26
	Odds	1.29,5.50,11.00,	cKelly	0.06,0.30,0.54
			Dist	0.87,0.02,0.00
Mechelen	2-1 Lierse	0.67,0.23,0.15	22/02Su	0.47,0.34,0.21
	Odds	1.50,4.33,6.50,	cKelly	0.00,0.54,0.31
			Dist	0.55,0.09,0.00
Gent	2-1 Club Brugg	0.38,0.29,0.38	22/02Su	0.17,0.27,0.56
	Odds	2.60,3.50,2.62,	cKelly	0.02,0.20,0.85
			Dist	0.23,0.00,0.14
Genk	0-1 Anderlecht	0.31,0.29,0.44	22/02Su	0.25,0.31,0.44
	Odds	3.20,3.40,2.25,	cKelly	0.01,0.11,0.08
			Dist	0.00,0.46,0.53

Gain_cum for port-1-14-15, Kelly, Aw-black



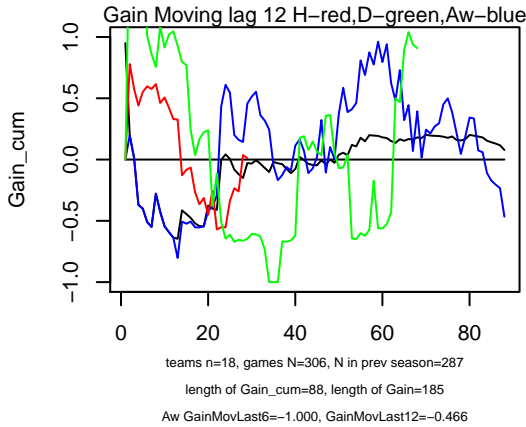
strategies that do not separate teams



- 1 [red] bet on the maximum>3.3 odds, Gain -0.69
- 2 [blue] bet on the minimum<2.5 odds, Gain 0.58
- 3 [green] bet on the minimum<3.0 odds except for Draw, Gain 0.62
- 4 [brown] bet on the maximum>3.3 odds except for Draw, Gain -0.39
- 5 [pink3] bet on the maximum>2.1 odds when it is Draw, Gain 0.73
- 6 [yellow] bet on the maximum>2.3 odds when it is Away win, Gain -0.69
- 7 [black] bet on the minimum<3.0 odds except for Draw, Gain -0.14
- 8 [magenta] bet prob-like on 2 largest odds, Gain -0.71
- 9 [violet] bet on H if oddH<oddD, Gain 0.22
- a [orange] bet prob-like on H,D when maximal odd is Away, Gain 0.09
- b [grey50] bet on largest new-prob if max>1.5 others, Gain -0.04
- c [grey30] bet on Draw, Gain -0.48
- d [grey70] bet on Draw if min odd>2.1, Gain -0.06
- e [darkblue] bet as complete Kelly, Gain -0.16
- f [green1] bet prob-like on high P&newP, Gain -0.82
- g [red2] bet prob-like on high P&newP + Draw, Gain -0.29
- i [blue3] bet prob-like on 2 largest Kelly if amin>2.0, Gain -0.11
- j [brown] bet as distance to similar probs, Gain -0.16

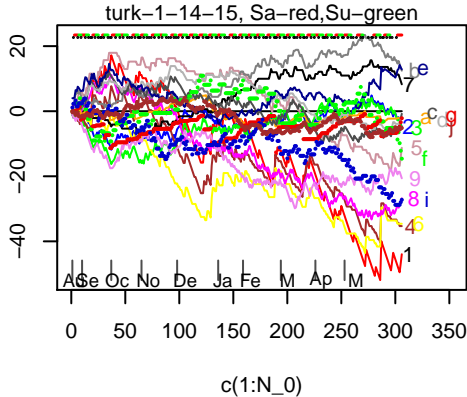
Team H, Team Aw,	Betfair probs,	Date,	Our probs	Kelly bets
Half Full-Time Goals,	Betfair odds, complete Kelly,	Bet amount indexes of strategies		
Rio Ave	Academica 0.53,0.29,0.19,	10 Nov 0.41,0.43,0.25,	Bet, 0,	0U, 0U
0.8 2.0	Odds ,1.89,3.50,5.30,cKelly--	0.00,0.54,0.24	Bet 1.51 239a, 0.05 a, 0.00	
	Dist bet 0.37,0.01,0.00			
Sp Braga	5-0 Setubal 0.71,0.21,0.12	23/05Sa	0.53,0.21,0.26	
	Odds ,1.40,4.80,8.50,	cKelly 0.00,0.28,0.46	Dist 0.91,0.33,0.00	
Rio Ave	0-1 Sp Lisbon 0.17,0.25,0.62	23/05Sa	0.11,0.35,0.56	
	Odds ,5.75,4.00,1.62,	cKelly 0.05,0.38,0.09	Dist 0.00,0.09,0.03	
Nacional	3-0 Pacos Ferr 0.44,0.29,0.31	23/05Sa	0.37,0.30,0.33	
	Odds ,2.25,3.50,3.25,	cKelly 0.00,0.12,0.15	Dist 0.67,0.37,0.00	
Gil Vicent	0-2 Belenenses 0.22,0.27,0.56	23/05Sa	0.23,0.37,0.41	
	Odds ,4.60,3.70,1.80,	cKelly 0.16,0.45,0.00	Dist 0.09,0.25,0.00	
Estoril	2-0 Boavista 0.53,0.29,0.22	23/05Sa	0.43,0.23,0.34	
	Odds ,1.87,3.50,4.60,	cKelly 0.08,0.13,0.43	Dist 0.33,0.01,0.00	
Benfica	4-1 Maritimo 0.88,0.12,0.05	23/05Sa	0.71,0.19,0.10	
	Odds ,1.14,8.50,20.00,	cKelly 0.00,0.48,0.25	Dist 1.00,0.28,0.00	
Arouca	1-2 Moreirense 0.44,0.30,0.29	23/05Sa	0.37,0.18,0.45	
	Odds ,2.25,3.30,3.40,	cKelly 0.15,0.08,0.62	Dist 0.30,0.71,0.00	
Academica	2-4 Guimaraes 0.33,0.29,0.42	23/05Sa	0.20,0.37,0.51	
	Odds ,3.00,3.40,2.40,	cKelly 0.00,0.34,0.49	Dist 0.11,0.36,0.00	
Porto	2-0 Penafiel 0.95,0.07,0.02	22/05Fr	0.84,0.11,0.05	
	Odds ,1.05,15.00,51.00,	cKelly 0.00,0.40,0.15	Dist 1.00,0.08,0.00	
Boavista	0-1 Nacional 0.33,0.30,0.40	18/05Mo	0.30,0.18,0.51	
	Odds ,3.00,3.30,2.50,	cKelly 0.11,0.03,0.55	Dist 0.31,0.50,0.00	
Sp Lisbon	4-1 Sp Braga 0.58,0.26,0.20	17/05Su	0.49,0.26,0.24	
	Odds ,1.73,3.80,5.00,	cKelly 0.00,0.10,0.19	Dist 0.59,0.00,0.12	
Setubal	2-1 Arouca 0.47,0.29,0.28	17/05Mo	0.46,0.19,0.35	
	Odds ,2.15,3.40,3.60,	cKelly 0.13,0.01,0.29	Dist 0.66,0.68,0.00	
Penafiel	2-1 Gil Vicent 0.30,0.30,0.43	17/05Su	0.26,0.26,0.48	
	Odds ,3.30,3.30,2.30,	cKelly 0.04,0.04,0.28	Dist 0.00,0.08,0.24	
Pacos Ferr	3-2 Academica 0.55,0.28,0.22	17/05Mo	0.44,0.39,0.24	
	Odds ,1.83,3.60,4.60,	cKelly 0.00,0.44,0.15	Dist 0.42,0.00,0.07	
Moreirense	1-1 Estoril 0.42,0.30,0.32	17/05Su	0.30,0.26,0.43	
	Odds ,2.40,3.30,3.10,	cKelly 0.05,0.12,0.49	Dist 0.45,0.31,0.00	
Maritimo	4-0 Rio Ave 0.47,0.29,0.28	17/05Mo	0.35,0.29,0.36	
	Odds ,2.15,3.40,3.60,	cKelly 0.01,0.12,0.34	Dist 0.66,0.68,0.00	
Guimaraes	0-0 Benfica 0.10,0.17,0.77	17/05Su	0.14,0.20,0.66	
	Odds ,10.50,5.75,1.30,	cKelly 0.18,0.22,0.00	Dist 0.16,0.00,0.31	
Belenenses	1-1 Porto 0.07,0.15,0.82	17/05Su	0.10,0.21,0.68	
	Odds ,15.00,6.50,1.22,	cKelly 0.18,0.37,0.00	Dist 0.21,0.00,0.39	
Nacional	2-2 Guimaraes 0.44,0.31,0.32	11/05Mo	0.35,0.24,0.41	
	Odds ,2.25,3.25,3.10,	cKelly 0.08,0.11,0.43	Dist 0.45,0.48,0.00	
Porto	2-0 Gil Vicent 0.94,0.10,0.03	10/05Su	0.73,0.21,0.08	
	Odds ,1.06,10.00,29.00,	cKelly 0.00,0.97,0.34	Dist 1.00,0.12,0.00	
Moreirense	3-1 Setubal 0.48,0.32,0.29	10/05Su	0.37,0.24,0.39	
	Odds ,2.10,3.13,3.50,	cKelly 0.11,0.13,0.48	Dist 0.20,0.12,0.00	
Estoril	1-1 Sp Lisbon 0.21,0.27,0.60	10/05Su	0.13,0.32,0.55	
	Odds ,4.80,3.70,1.67,	cKelly 0.05,0.27,0.12	Dist 0.09,0.28,0.00	
Arouca	0-0 Boavista 0.53,0.31,0.24	10/05Su	0.40,0.12,0.48	
	Odds ,1.90,3.25,4.10,	cKelly 0.28,0.16,0.88	Dist 0.61,0.30,0.00	
Sp Braga	1-3 Maritimo 0.69,0.24,0.14	09/05Sa	0.50,0.19,0.31	
	Odds ,1.44,4.10,7.00,	cKelly 0.10,0.30,0.58	Dist 0.70,0.00,0.00	
Rio Ave	0-0 Pacos Ferr 0.44,0.32,0.32	09/05Sa	0.31,0.35,0.36	
	Odds ,2.25,3.13,3.13,	cKelly 0.00,0.24,0.27	Dist 0.04,0.14,0.00	
Benfica	4-0 Penafiel 0.94,0.10,0.03	09/05Sa	0.83,0.15,0.03	
	Odds ,1.06,10.00,29.00,	cKelly 0.01,0.51,0.14	Dist 1.00,0.13,0.00	

Gain_cum for turk-1-14-15, Kelly, Aw-black



strategies that do not separate teams

(csGain[(N_1 + 1):N], 1)

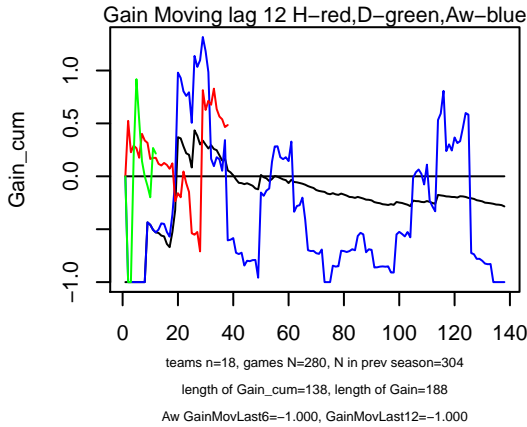


- 1 [red] bet on the maximum>3.3 odds, Gain 0.36
- 2 [blue] bet on the minimum<2.5 odds, Gain -0.51
- 3 [green] bet on the minimum<3.0 odds except for Draw, Gain -0.51
- 4 [brown] bet on the maximum>3.3 odds except for Draw, Gain 0.18
- 5 [pink3] bet on the maximum>2.1 odds when it is Draw, Gain 0.36
- 6 [yellow] bet on the maximum>2.3 odds when it is Away win, Gain 0.73
- 7 [black] bet on the minimum<2.3 odds when it is Away win, Gain -0.58
- 8 [magenta] bet prob-like on 2 largest odds, Gain 0.38
- 9 [violet] bet on H if oddH<oddD, Gain 0.05
- a [orange] bet prob-like on H,D when maximal odds is away, Gain -0.16
- b [grey50] bet on largest new prob if max>1.5 others, Gain -0.37
- c [grey30] bet on Draw, Gain 0.58
- d [grey70] bet on Draw if min odd>2.1, Gain 0.18
- e [darkblue] bet as complete Kelly, Gain 0.09
- f [green1] bet prob-like on high P&newP, Gain -1.01
- g [red2] bet prob-like on high P&newP + Draw, Gain 0.19
- i [blue3] bet prob-like on 2 largest Kelly if amin>2.0, Gain -0.55
- j [brown] bet as distance to similar probs, Gain 0.03

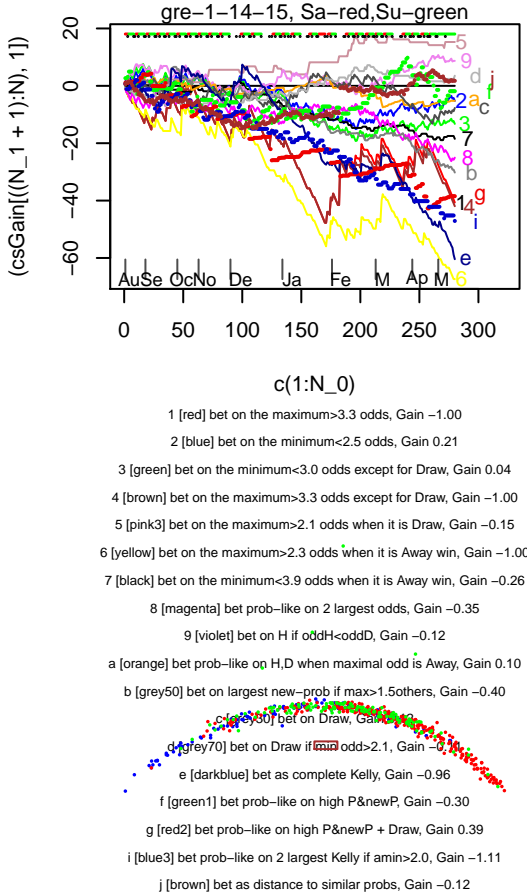
Team H, Team Aw, Betfair probs, Date, Our probs, Kelly bets
Half|Full-Time Goals, Betfair odds, complete Kelly, Bet amount|indexes of strategies

Sivasspor	1-1	Trabzonspor	0.31,0.26,0.49	30/05Sa	0.18,0.20,0.62
Odds	3.20,3.80,2.05,	cKelly	0.06,0.10,0.78	Dist	0.66,0.31,0.00
Rizespor	1-1	Galatasara	0.33,0.27,0.47	30/05Sa	0.10,0.21,0.69
Odds	3.00,3.75,2.15,	cKelly	0.05,0.19,1.25	Dist	0.63,0.31,0.00
Mersin Idm	2-2	Buyuksehr	0.17,0.23,0.67	30/05Sa	0.25,0.30,0.45
Odds	5.75,4.40,1.50,	cKelly	0.42,0.47,0.00	Dist	0.37,0.00,0.10
Fenerbahce	2-0	Kasimpasa	0.56,0.24,0.27	30/05Sa	0.64,0.24,0.12
Odds	1.80,4.10,3.70,	cKelly	0.63,0.10,0.00	Dist	0.87,0.56,0.00
Bursaspor	0-0	Konyaspor	0.71,0.21,0.14	30/05Sa	0.46,0.27,0.27
Odds	1.40,4.80,7.00,	cKelly	0.00,0.52,0.54	Dist	0.85,0.34,0.00
Eskisehirs	1-3	Akhisar Be	0.53,0.26,0.27	29/05Fr	0.31,0.34,0.36
Odds	1.87,3.80,3.70,	cKelly	0.00,0.45,0.49	Dist	0.70,0.10,0.00
Erciyesspor	4-3	Karabukspo	0.40,0.27,0.40	29/05Fr	0.31,0.23,0.47
Odds	2.50,3.75,2.50,	cKelly	0.05,0.08,0.39	Dist	0.65,0.11,0.00
Besiktas	2-1	Gencelbir	0.51,0.27,0.29	29/05Fr	0.47,0.28,0.25
Odds	1.95,3.75,3.50,	cKelly	0.06,0.12,0.05	Dist	0.80,0.17,0.00
Balikesirs	1-1	Gazianteps	0.43,0.26,0.37	29/05Fr	0.37,0.18,0.45
Odds	2.30,3.80,2.70,	cKelly	0.10,0.06,0.43	Dist	0.77,0.19,0.00
Buyuksehr	2-2	Fenerbahce	0.32,0.28,0.45	25/05Mo	0.19,0.28,0.53
Odds	3.10,3.60,2.20,	cKelly	0.00,0.12,0.44	Dist	0.40,0.02,0.00
Akhisar Be	0-1	Bursaspor	0.22,0.24,0.60	25/05Mo	0.22,0.33,0.45
Odds	4.60,4.20,1.67,	cKelly	0.16,0.42,0.00	Dist	0.43,0.00,0.12
Karabukspo	2-1	Sivasspor	0.39,0.28,0.38	24/05Su	0.36,0.22,0.41
Odds	2.55,3.60,2.63,	cKelly	0.06,0.03,0.20	Dist	0.58,0.00,0.16
Gazianteps	3-2	Eskisehirs	0.36,0.29,0.41	24/05Su	0.29,0.23,0.48
Odds	2.80,3.50,2.45,	cKelly	0.05,0.06,0.37	Dist	0.47,0.00,0.21
Galatasara	2-0	Besiktas	0.53,0.27,0.26	24/05Su	0.49,0.20,0.30
Odds	1.90,3.70,3.90,	cKelly	0.09,0.04,0.20	Dist	0.77,0.24,0.00
Trabzonspo	3-2	Balikesirs	0.75,0.17,0.12	23/05Sa	0.67,0.21,0.11
Odds	1.33,5.75,8.00,	cKelly	0.02,0.21,0.08	Dist	0.87,0.00,0.10
Konyaspor	1-1	Rizespor	0.50,0.28,0.27	23/05Sa	0.53,0.25,0.22
Odds	2.00,3.60,3.70,	cKelly	0.00,0.04,0.02	Dist	0.87,0.20,0.00
Kasimpasa	3-3	Erciyesspor	0.65,0.22,0.17	23/05Sa	0.50,0.24,0.26
Odds	1.53,4.50,5.75,	cKelly	0.00,0.25,0.37	Dist	0.99,0.37,0.00
Gencelbir	1-2	Mersin Idm	0.44,0.28,0.32	22/05Fr	0.38,0.27,0.35
Odds	2.25,3.60,3.10,	cKelly	0.01,0.06,0.15	Dist	0.84,0.29,0.00
Rizespor	3-1	Akhisar Be	0.48,0.27,0.30	18/05Mo	0.19,0.32,0.49
Odds	2.10,3.70,3.30,	cKelly	0.00,0.44,0.86	Dist	0.82,0.25,0.00
Besiktas	0-1	Konyaspor	0.83,0.14,0.08	18/05Mo	0.51,0.25,0.24
Odds	1.20,7.00,13.00,	cKelly	0.00,0.79,0.64	Dist	0.89,0.00,0.00
Mersin Idm	0-1	Fenerbahce	0.13,0.19,0.74	17/05Su	0.17,0.19,0.63
Odds	7.50,5.20,1.36,	cKelly	0.20,0.16,0.00	Dist	0.35,0.00,0.14
Eskisehirs	2-0	Trabzonspor	0.29,0.27,0.49	17/05Su	0.17,0.27,0.56
Odds	3.40,3.75,2.05,	cKelly	0.00,0.11,0.47	Dist	0.44,0.11,0.00
Erciyesspor	0-1	Buyuksehr	0.18,0.24,0.62	17/05Su	0.15,0.30,0.58
Odds	5.50,4.20,1.60,	cKelly	0.04,0.23,0.04	Dist	0.33,0.00,0.23
Bursaspor	2-0	Gazianteps	0.74,0.19,0.12	17/05Su	0.57,0.24,0.19
Odds	1.36,5.25,8.00,	cKelly	0.00,0.36,0.30	Dist	0.78,0.01,0.00
Sivasspor	1-1	Kasimpasa	0.42,0.27,0.36	16/05Sa	0.36,0.23,0.40
Odds	2.40,3.70,2.75,	cKelly	0.04,0.05,0.23	Dist	0.74,0.21,0.00
Galatasara	1-0	Gencelbir	0.82,0.15,0.08	16/05Sa	0.56,0.25,0.20
Odds	1.22,6.50,13.00,	cKelly	0.00,0.66,0.48	Dist	0.87,0.00,0.08
Balikesirs	4-2	Karabukspo	0.26,0.26,0.54	16/05Sa	0.30,0.22,0.49
Odds	3.80,3.90,1.85,	cKelly	0.18,0.06,0.06	Dist	0.50,0.00,0.16

Gain_cum for gre-1-14-15, Kelly, Aw-black

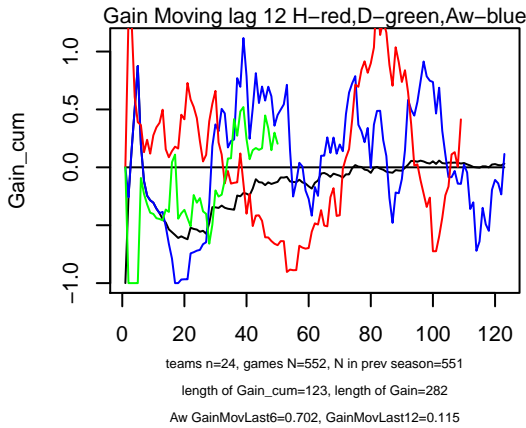


strategies that do not separate teams

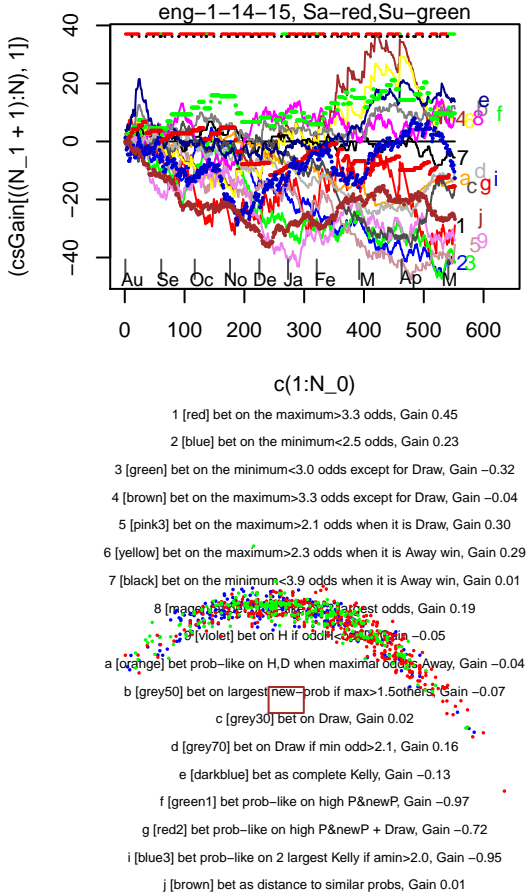


Team H, Team Aw,	Betfair probs,	Date,	Our probs	Kelly bets
Half Full-Time Goals,	Betfair odds, complete Kelly,	Bet amount indexes of strategies		
Atromitos ,Asteras Tr,0.49,0.29,0.22,	10 Nov	0.33,0.31,0.36,	Bet,	0, 0U, 0U
1.0 2.0	Odds ,2.04,3.40,4.50,	cKelly--0.00,0.21,0.49	Bet	0.34 23a, 0.13 ac, 0.00
		Dist bet	0.72,0.09,0.00	
Platanias 1-1 Olympiakos	0.19,0.43,0.44	10/05Su	0.16,0.15,0.70	
Odds ,5.25,2.30,2.25,	cKelly 0.20,0.03,1.39	Dist	0.30,0.14,0.00	
Panthrakik 2-0 Xanthi	0.83,0.17,0.07	10/05Su	0.31,0.32,0.37	
Odds ,1.20,6.00,15.00,	cKelly 0.00,1.41,1.07	Dist	1.00,0.04,0.00	
Panionios 0-0 PAOK	0.55,0.48,0.05	10/05Su	0.24,0.27,0.49	
Odds ,1.83,2.10,19.00,	cKelly 0.44,0.64,1.04	Dist	0.49,0.19,0.00	
Panetoliko 2-0 Veria	0.67,0.24,0.16	10/05Su	0.41,0.26,0.33	
Odds ,1.50,4.20,6.25,	cKelly 0.00,0.42,0.65	Dist	0.71,0.07,0.00	
Panathinaï 3-1 Giannina	0.69,0.23,0.14	10/05Su	0.60,0.21,0.19	
Odds ,1.44,4.30,7.00,	cKelly 0.04,0.15,0.21	Dist	0.67,0.02,0.00	
Kallionis 1-1 Atromitos	0.26,0.54,0.27	10/05Su	0.24,0.29,0.47	
Odds ,3.90,1.85,3.75,	cKelly 0.28,0.02,0.84	Dist	0.31,0.15,0.00	
Ergotelis 0-2 Levadeiakos	0.12,0.21,0.74	10/05Su	0.29,0.23,0.48	
Odds ,8.50,4.75,1.36,	cKelly 0.62,0.45,0.00	Dist	0.39,0.00,0.22	
Asteras Tr 2-0 Kerkyra	0.77,0.19,0.11	10/05Su	0.50,0.27,0.23	
Odds ,1.30,5.20,9.50,	cKelly 0.00,0.64,0.51	Dist	0.98,0.09,0.00	
Xanthi 0-0 Asteras Tr	0.40,0.32,0.34	03/05Su	0.23,0.29,0.48	
Odds ,2.50,3.10,2.90,	cKelly 0.04,0.18,0.66	Dist	0.93,0.11,0.00	
Veria 0-1 Panthrakik	0.32,0.27,0.40	10/05Su	0.31,0.30,0.39	
Odds ,3.13,3.75,2.10,	cKelly 0.10,0.17,0.01	Dist	0.64,0.22,0.00	
PAOK 1-0 Levadeiakos	0.69,0.25,0.12	03/05Su	0.57,0.21,0.22	
Odds ,1.44,4.00,8.00,	cKelly 0.07,0.20,0.32	Dist	0.76,0.11,0.00	
Olympiakos 5-0 Kallionis	0.93,0.11,0.04	03/05Su	0.63,0.18,0.19	
Odds ,1.08,9.50,26.00,	cKelly 0.00,0.99,0.61	Dist	1.00,0.03,0.00	
Kerkyra 1-1 Panathinaï	0.26,0.31,0.50	03/05Su	0.17,0.15,0.68	
Odds ,3.90,3.25,2.00,	cKelly 0.12,0.07,1.05	Dist	0.71,0.28,0.00	
Giannina 0-0 Ergotelis	0.78,0.19,0.10	03/05Su	0.59,0.27,0.14	
Odds ,1.29,5.25,10.50,	cKelly 0.00,0.52,0.26	Dist	0.99,0.02,0.00	
Atromitos 3-1 Panionios	0.59,0.29,0.19	03/05Su	0.46,0.36,0.18	
Odds ,1.70,3.50,5.25,	cKelly 0.01,0.38,0.12	Dist	0.67,0.27,0.00	
Ergotelis 1-2 Kerkyra	0.22,0.29,0.57	27/04Su	0.23,0.23,0.54	
Odds ,4.60,3.50,1.75,	cKelly 0.09,0.04,0.09	Dist	0.50,0.26,0.00	
Platanias 2-0 Panetoliko	0.62,0.28,0.17	26/04Su	0.32,0.24,0.44	
Odds ,1.62,3.60,5.75,	cKelly 0.07,0.42,0.93	Dist	0.73,0.20,0.00	
PAOK 1-1 Giannina	0.74,0.22,0.11	26/04Su	0.46,0.24,0.30	
Odds ,1.36,4.60,9.00,	cKelly 0.00,0.50,0.65	Dist	0.88,0.00,0.09	
Panionios 2-2 Olympiakos	0.22,0.26,0.59	26/04Su	0.17,0.23,0.60	
Odds ,4.60,3.90,1.70,	cKelly 0.02,0.03,0.17	Dist	0.46,0.10,0.00	
Levadeiakos 2-1 Atromitos	0.55,0.30,0.23	26/04Su	0.16,0.28,0.56	
Odds ,1.83,3.30,4.33,	cKelly 0.03,0.52,1.25	Dist	0.73,0.04,0.00	
Asteras Tr 2-1 Panthrakik	0.58,0.28,0.21	26/04Su	0.47,0.33,0.21	
Odds ,1.73,3.60,4.80,	cKelly 0.00,0.28,0.11	Dist	0.70,0.22,0.00	
Panathinaï 2-0 Xanthi	0.67,0.25,0.13	25/04Sa	0.64,0.19,0.18	
Odds ,1.50,4.00,7.50,	cKelly 0.11,0.05,0.15	Dist	0.77,0.14,0.00	
Veria 4-0 Asteras Tr	0.41,0.32,0.33	20/04Mo	0.19,0.28,0.53	
Odds ,2.45,3.13,3.00,	cKelly 0.05,0.23,0.87	Dist	0.83,0.58,0.00	
Panthrakik 2-1 Panathinaï	0.24,0.29,0.53	19/04Su	0.13,0.21,0.65	
Odds ,4.10,3.50,1.87,	cKelly 0.05,0.08,0.78	Dist	0.56,0.32,0.00	
Olympiakos 4-0 Levadeiakos	0.88,0.13,0.06	19/04Su	0.70,0.16,0.14	
Odds ,1.14,7.50,17.00,	cKelly 0.00,0.43,0.33	Dist	1.00,0.04,0.00	
Atromitos 1-1 Giannina	0.60,0.29,0.18	19/04Su	0.43,0.31,0.26	
Odds ,1.67,3.50,5.50,	cKelly 0.00,0.30,0.34	Dist	0.68,0.21,0.00	

Gain_cum for eng-1-14-15, Kelly, Aw-black

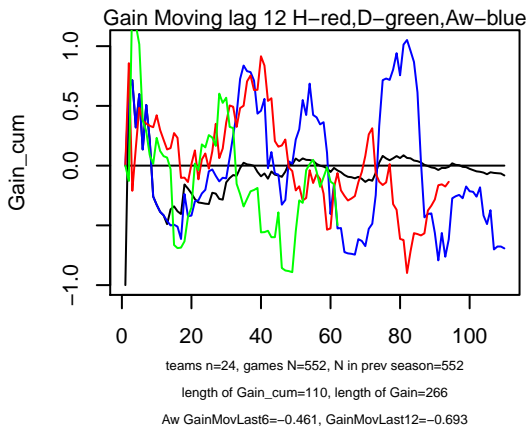


strategies that do not separate teams

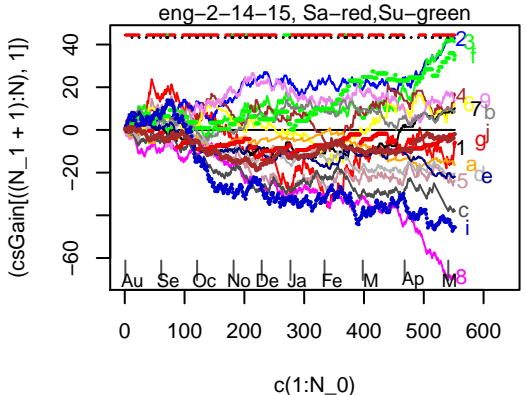


Team H, Team Aw,	Betfair probs,	Date,	Our probs	Kelly bets
Half Full-Time Goals, Betfair odds, complete Kelly, Bet amount indexes of strategies				
Barnsley ,Colchester	0.45,0.28,0.30,	14 Nov	0.51,0.20,0.29, Bet,	0.11B, 0, 0
1.0 2.8	Odds ,2.22,3.55,3.30,cKelly--	0.33,0.01,0.07	Bet 0.23 2,	0.97 158cdj, 0.12 8j
			Dist bet 0.00,0.21,0.41	
Yeovil ,Fleetwood	0.41,0.29,0.33,	15 Nov	0.25,0.29,0.46, Bet,	0, 0, 0.19A
1.0 2.4	Odds ,2.42,3.45,3.00,cKelly--	0.00,0.16,0.57	Bet 0.23 2 ,	0.98 158cd, 0.13 8j
			Dist bet 0.40,0.00,0.18	
Preston ,Bradford	0.61,0.24,0.17,	15 Nov	0.51,0.31,0.18, Bet,	0, 0.09B, 0.01A
1.0 2.3	Odds ,1.63,4.10,5.80,cKelly--	0.00,0.32,0.12	Bet 0.24 2 ,	0.10 8c, 0.81 168j
			Dist bet 0.88,0.00,0.20	
Oldham ,Crawley To	0.52,0.27,0.24,	15 Nov	0.35,0.30,0.35, Bet,	0, 0U, 0.15A
1.4 3.1	Odds ,1.94,3.65,4.20,cKelly--	0.00,0.27,0.46	Bet 0.24 2 ,	0.12 8c, 0.84 168j
			Dist bet 0.75,0.00,0.42	
Gillingham,Leyton Ori	0.29,0.29,0.44,	15 Nov	0.53,0.23,0.24, Bet,	0.33B, 0, 0
1.1 2.7	Odds ,3.40,3.40,2.26,cKelly--	0.93,0.21,0.08	Bet 0.57 18,	0.22 8cdj, 0.25 27j
			Dist bet 0.00,0.39,0.42	
Coventry ,Notts Coun	0.48,0.28,0.29,	15 Nov	0.42,0.32,0.26, Bet,	0, 0.05A, 0
1.1 2.2	Odds ,1.03,3.55,3.45,cKelly--	0.05,0.19,0.06	Bet 0.23 2 ,	0.97 158cdj, 0.11 8j
			Dist bet 0.00,0.20,0.10	
Doncaster ,Sheffield	0.34,0.30,0.39,	15 Nov	0.25,0.27,0.48, Bet,	0, 0, 0.14A
1.1 2.7	Odds ,2.90,3.35,2.54,cKelly--	0.02,0.09,0.43	Bet 0.13 8j,	0.98 158cd, 0.02 7j
			Dist bet 0.24,0.00,0.47	
Walsall ,Peterboro	0.37,0.29,0.37,	15 Nov	0.36,0.28,0.36, Bet,	0, 0, 0
1.0 2.2	Odds ,2.70,3.40,2.70,cKelly--	0.03,0.02,0.03	Bet 0.14 8j,	0.98 158cd, 0.02 7j
			Dist bet 0.34,0.00,0.50	
Crewe ,Chesterfie	0.30,0.27,0.46,	15 Nov	0.35,0.25,0.40, Bet,	0.07B, 0, 0
0.8 1.7	Odds ,3.30,3.70,2.18,cKelly--	0.22,0.05,0.03	Bet 0.12 8j,	0.96 158cd, 0.25 27j
			Dist bet 0.32,0.00,0.32	
Port Vale ,Rochdale	0.41,0.29,0.35,	15 Nov	0.36,0.16,0.48, Bet,	0, 0, 0.21B
1.2 2.5	Odds ,2.42,3.50,2.88,cKelly--	0.15,0.05,0.60	Bet 0.23 2 ,	0.97 158cd, 0.13 8j
			Dist bet 0.23,0.00,0.00	
Swindon ,Bristol Ci	0.40,0.29,0.35,	15 Nov	0.31,0.18,0.51, Bet,	0, 0, 0.25B
0.9 3.0	Odds ,2.50,3.50,2.86,cKelly--	0.11,0.09,0.70	Bet 0.00 j,	0.98 158cdj, 0.13 8
			Dist bet 0.13,0.29,0.00	
Swindon 2-2 Leyton Ori	0.38,0.28,0.37	03/05Su	0.63,0.15,0.22	
	Odds ,2.63,3.60,2.70,	cKelly 1.11,0.13,0.13	Dist 0.51,0.00,0.27	
Sheffield 1-1 Chesterfie	0.43,0.29,0.31	03/05Su	0.40,0.22,0.38	
	Odds ,2.30,3.50,3.25,	cKelly 0.07,0.04,0.30	Dist 0.14,0.00,0.63	
Port Vale 1-2 Fleetwood	0.47,0.28,0.29	03/05Su	0.33,0.28,0.39	
	Odds ,2.15,3.60,3.50,	cKelly 0.00,0.14,0.43	Dist 0.45,0.00,0.38	
Oldham 1-1 Peterboro	0.37,0.29,0.37	03/05Su	0.38,0.24,0.38	
	Odds ,2.70,3.50,2.70,	cKelly 0.07,0.00,0.09	Dist 0.62,0.00,0.24	
Milton Key 5-1 Yeovil	0.82,0.13,0.07	03/05Su	0.61,0.20,0.18	
	Odds ,1.22,7.50,15.00,	cKelly 0.00,0.46,0.40	Dist 0.71,0.00,0.01	
Gillingham 3-1 Notts Coun	0.35,0.28,0.40	03/05Su	0.56,0.26,0.18	
	Odds ,2.88,3.60,2.50,	cKelly 0.91,0.20,0.02	Dist 0.39,0.00,0.22	
Doncaster 5-2 Scunthorpe	0.48,0.28,0.27	03/05Su	0.31,0.27,0.42	
	Odds ,2.10,3.60,3.70,	cKelly 0.00,0.18,0.57	Dist 0.58,0.00,0.48	
Crewe 0-1 Bradford	0.38,0.29,0.36	03/05Su	0.37,0.31,0.32	
	Odds ,2.63,3.50,2.80,	cKelly 0.04,0.09,0.01	Dist 0.58,0.00,0.54	
Crawley To 1-2 Coventry	0.32,0.29,0.42	03/05Su	0.38,0.33,0.29	
	Odds ,3.10,3.50,2.40,	cKelly 0.31,0.26,0.00	Dist 0.87,0.00,0.17	
Colchester 1-0 Preston	0.19,0.24,0.60	03/05Su	0.16,0.25,0.59	
	Odds ,5.40,4.20,1.67,	cKelly 0.01,0.07,0.04	Dist 0.34,0.00,0.40	
Bristol Ci 8-2 Walsall	0.57,0.25,0.20	03/05Su	0.53,0.30,0.17	
	Odds ,1.75,4.00,5.00,	cKelly 0.04,0.19,0.04	Dist 0.79,0.00,0.27	
Barnsley 5-0 Rochdale	0.40,0.29,0.34	03/05Su	0.43,0.19,0.38	
	Odds ,2.50,3.50,2.90,	cKelly 0.21,0.00,0.21	Dist 0.14,0.22,0.00	
Colchester 1-1 Swindon	0.44,0.27,0.31	28/04Tu	0.25,0.11,0.63	
	Odds ,2.25,3.75,3.20,	cKelly 0.19,0.18,1.28	Dist 0.60,0.09,0.00	
Yeovil 1-2 Port Vale	0.34,0.29,0.38	25/04Sa	0.31,0.21,0.48	
	Odds ,2.90,3.40,2.63,	cKelly 0.08,0.03,0.45	Dist 0.20,0.00,0.48	
Walsall 2-0 Oldham	0.51,0.28,0.24	25/04Sa	0.34,0.33,0.33	
	Odds ,1.98,3.60,4.20,	cKelly 0.00,0.33,0.39	Dist 0.80,0.00,0.82	
Scunthorpe 2-1 Gillingham	0.43,0.29,0.31	25/04Sa	0.31,0.27,0.42	
	Odds ,2.30,3.50,3.25,	cKelly 0.02,0.12,0.47	Dist 0.14,0.00,0.63	

Gain_cum for eng-2-14-15, Kelly, Aw-black



strategies that do not separate teams



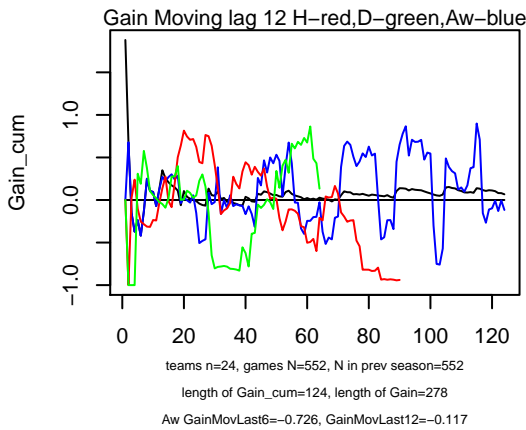
- 1 [red] bet on the maximum>3.3 odds, Gain 0.58
- 2 [blue] bet on the minimum<2.5 odds, Gain 0.23
- 3 [green] bet on the minimum<3.0 odds except for Draw, Gain -0.08
- 4 [brown] bet on the maximum>3.3 odds except for Draw, Gain 0.55
- 5 [pink3] bet on the maximum>2.1 odds when it is Draw, Gain -0.37
- 6 [yellow] bet on the maximum>2.3 odds when it is Away win, Gain 0.40
- 7 [black] bet on the minimum<2.5 odds when it is Away win, Gain 0.34
- 8 [magenta] bet prob-like on 2 largest odds, Gain 0.01
- 9 [violet] bet on H if odds < 2.0 and D, Gain -0.40
- a [orange] bet prob-like on H,D when maximum odds is away, Gain -0.18
- b [grey50] bet on largest new-prob if max>1.5 others, Gain 0.32
- c [grey30] bet on Draw, Gain 0.00
- d [grey70] bet on Draw if min odds>2.1, Gain -0.21
- e [darkblue] bet as complete Kelly, Gain -0.14
- f [green1] bet prob-like on high P&newP, Gain 1.06
- g [red2] bet prob-like on high P&newP + Draw, Gain 0.28
- i [blue3] bet prob-like on 2 largest Kelly if amin>2.0, Gain -0.32
- j [brown] bet as distance to similar probs, Gain 0.25

Team H, Team Aw, Betfair probs, Date, Our probs, Kelly bets

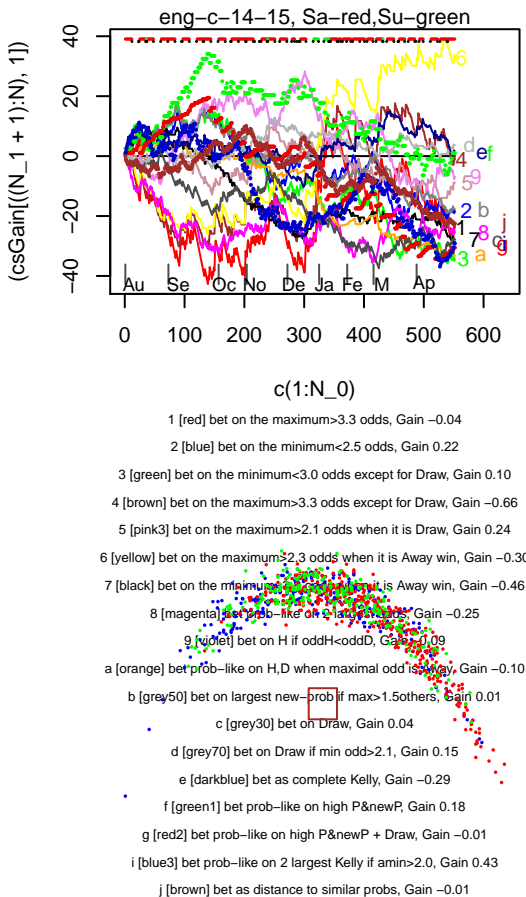
Half|Full-Time Goals, Betfair odds, complete Kelly, Bet amount|indexes of strategies

Cambridge	Northampton	0.44,0.29,0.32	14 Nov	0.24,0.20,0.56	Bet,	0,	0,	0U
1.3 3.1	Odds	2.26,3.50,3.15,cKelly--0.11,0.20,1.01	Bet 0.35 2 ,	0.63 18c ,	0.32 8b			
				Dist bet	0.49,0.17,0.00			
Plymouth	Portsmouth	0.52,0.30,0.25,	15 Nov	0.40,0.29,0.30	Bet,	0,	0,	0U
1.1 2.2	Odds	1.93,3.35,3.95,cKelly--0.01,0.14,0.26	Bet 0.31 2 ,	0.01 8c,	1.59 1468			
				Dist bet	0.36,0.00,0.22			
Shrewsbury	Mansfield	0.60,0.27,0.16,	15 Nov	0.60,0.22,0.19	Bet,	0,	0,	0U
1.2 2.5	Odds	1.67,3.65,6.20,cKelly--0.10,0.00,0.09	Bet 4.66 2bfg ,	0.40 8c ,	1.53 1468			
				Dist bet	0.39,0.03,0.00			
Southend	Hartlepool	0.60,0.27,0.18,	15 Nov	0.52,0.26,0.22	Bet,	0,	0,	0U
1.1 2.0	Odds	1.66,3.65,5.50,cKelly--0.02,0.11,0.17	Bet 4.69 2bfg ,	0.43 8c ,	1.53 1468			
				Dist bet	0.43,0.16,0.00			
Morecambe	Bury	0.29,0.30,0.47,	15 Nov	0.24,0.24,0.51	Bet,	0,	0,	0U
1.3 2.2	Odds	3.45,3.35,2.14,cKelly--0.05,0.04,0.31	Bet 1.13 148,	0.03 8c ,	0.91 27b			
				Dist bet	0.00,0.09,0.12			
Luton	Tranmere	0.56,0.29,0.23,	15 Nov	0.53,0.23,0.24	Bet,	0,	0,	0U
1.6 3.0	Odds	1.77,3.50,4.30,cKelly--0.10,0.04,0.11	Bet 0.70 2b ,	0.01 8c,	1.56 1468			
				Dist bet	0.63,0.00,0.13			
York	Oxford	0.45,0.30,0.30,	15 Nov	0.30,0.38,0.36	Bet,	0,	0U,	0U
0.5 1.5	Odds	2.20,3.35,3.30,cKelly--0.00,0.40,0.34	Bet 0.35 2 ,	0.59 18c,	0.01 8			
				Dist bet	0.49,0.00,0.02			
Carlisle	Accrington	0.50,0.30,0.29,	15 Nov	0.33,0.23,0.44	Bet,	0,	0,	0U
1.2 3.0	Odds	2.00,3.35,3.45,cKelly--0.10,0.20,0.68	Bet 0.33 2 ,	0.01 8c ,	1.53 1468			
				Dist bet	0.41,0.03,0.00			
Stevenage	Cheltenham	0.49,0.30,0.30,	15 Nov	0.63,0.25,0.11	Bet,	0.29B,	0,	0
1.0 2.2	Odds	2.06,3.35,3.35,cKelly--0.90,0.16,0.04	Bet 3.92 2bfg ,	1.05 18c ,	0.01 8			
				Dist bet	0.49,0.17,0.00			
AFC Wimb	Dag and Re	0.55,0.29,0.24,	15 Nov	0.48,0.25,0.27	Bet,	0,	0,	0U
0.9 2.5	Odds	1.81,3.50,4.20,cKelly--0.05,0.09,0.17	Bet 0.65 2b ,	0.01 8c,	1.57 1468			
				Dist bet	0.44,0.00,0.16			
Tranmere	0-1 Bury	0.15,0.24,0.64	02/05Sa	0.21,0.24,0.55				
	Odds	6.50,4.20,1.57,	cKelly 0.21,0.11,0.00	Dist	0.14,0.00,0.25			
Shrewsbury	0-2 Plymouth	0.59,0.26,0.18	02/05Sa	0.52,0.26,0.21				
	Odds	1.70,3.90,5.50,	cKelly 0.00,0.10,0.14	Dist	0.85,0.00,0.61			
Portsmouth	1-1 York	0.40,0.29,0.33	02/05Sa	0.39,0.33,0.28				
	Odds	2.50,3.40,3.00,	cKelly 0.06,0.14,0.01	Dist	0.52,0.22,0.00			
Northampton	2-3 Wycombe	0.36,0.28,0.38	02/05Sa	0.42,0.23,0.35				
	Odds	2.75,3.60,2.60,	cKelly 0.28,0.03,0.05	Dist	0.38,0.00,0.54			
Newport Co	0-1 Oxford	0.38,0.29,0.36	02/05Sa	0.40,0.31,0.29				
	Odds	2.60,3.50,2.80,	cKelly 0.14,0.13,0.00	Dist	0.42,0.00,0.05			
Morecambe	3-1 Southend	0.20,0.26,0.56	02/05Sa	0.19,0.34,0.50				
	Odds	5.00,3.80,1.80,	cKelly 0.05,0.28,0.01	Dist	0.15,0.00,0.23			
Luton	2-0 Stevenage	0.50,0.26,0.26	02/05Sa	0.29,0.21,0.49				
	Odds	2.00,3.80,3.80,	cKelly 0.07,0.22,0.87	Dist	0.72,0.00,0.36			
Exeter	2-1 Dag and Re	0.47,0.29,0.29	02/05Sa	0.42,0.25,0.33				
	Odds	2.15,3.50,3.50,	cKelly 0.05,0.05,0.20	Dist	0.50,0.00,0.25			
Carlisle	3-3 Hartlepool	0.39,0.29,0.35	02/05Sa	0.42,0.15,0.43				
	Odds	2.55,3.50,2.88,	cKelly 0.24,0.00,0.40	Dist	0.58,0.18,0.00			
Cambridge	2-3 Burton	0.22,0.26,0.54	02/05Sa	0.14,0.25,0.61				
	Odds	4.50,3.80,1.85,	cKelly 0.01,0.06,0.41	Dist	0.20,0.00,0.20			
AFC Wimb	1-1 Cheltenham	0.50,0.28,0.24	02/05Sa	0.56,0.32,0.15				
	Odds	2.00,3.60,4.10,	cKelly 0.38,0.18,0.00	Dist	0.76,0.21,0.00			
Accrington	2-1 Mansfield	0.41,0.29,0.34	02/05Sa	0.37,0.26,0.37				
	Odds	2.45,3.50,2.90,	cKelly 0.03,0.04,0.16	Dist	0.71,0.21,0.00			
York	0-2 Newport Co	0.40,0.29,0.33	25/04Sa	0.28,0.31,0.41				
	Odds	2.50,3.40,3.00,	cKelly 0.00,0.17,0.37	Dist	0.52,0.22,0.00			
Wycombe	0-1 Morecambe	0.64,0.23,0.15	25/04Sa	0.43,0.33,0.25				
	Odds	1.57,4.33,6.50,	cKelly 0.00,0.51,0.41	Dist	0.86,0.42,0.00			
Stevenage	1-0 Carlisle	0.62,0.24,0.17	25/04Sa	0.63,0.17,0.21				
	Odds	1.62,4.20,6.00,	cKelly 0.17,0.00,0.13	Dist	0.79,0.36,0.00			
Southend	1-0 Luton	0.55,0.27,0.21	25/04Sa	0.41,0.30,0.29				
	Odds	1.83,3.70,4.80,	cKelly 0.00,0.26,0.34	Dist	0.77,0.00,0.72			
Plymouth	3-2 Tranmere	0.54,0.27,0.22	25/04Sa	0.49,0.28,0.23				
	Odds	1.85,3.75,4.60,	cKelly 0.00,0.09,0.08	Dist	0.88,0.00,0.80			

Gain_cum for eng-c-14-15, Kelly, Aw-black



strategies that do not separate teams



Team H, Team Aw,	Betfair probs,	Date,	Our probs	Kelly bets
Half Full-Time Goals, Betfair odds, complete Kelly, Bet amount indexes of strategies				
Alfreton T,Bristol Rv,	0.25,0.29,0.53,	11 Nov	0.12,0.28,0.61,	Bet, 0, 0, 0.16A
0.8 2.4	Odds ,3.95,3.45,1.88,cKelly--0.01,0.11,0.53	Bet 0.00 , 0.02 c, 0.82 23bf		
		Dist bet 0.21,0.00,0.05		
Barnet ,Torquay	,0.58,0.27,0.22,	11 Nov	0.53,0.20,0.27,	Bet, 0, 0, 0.07A
1.1 2.5	Odds ,1.71,3.70,4.50,cKelly--0.12,0.07,0.23	Bet 0.87 23bf, 0.02 c, 0.00		
		Dist bet 0.46,0.07,0.00		
Macclesfie,Chester	,0.47,0.29,0.28,	11 Nov	0.52,0.22,0.26,	Bet, 0U, 0, 0
1.2 2.1	Odds ,2.12,3.45,3.60,cKelly--0.28,0.01,0.05	Bet 0.94 23bi, 0.11 cd, 0.36 j		
		Dist bet 0.54,0.00,0.22		
Forest Gre,Eastleigh	,0.53,0.27,0.26,	11 Nov	0.44,0.26,0.30,	Bet, 0, 0, 0.05A
1.4 3.2	Odds ,1.90,3.70,3.80,cKelly--0.01,0.10,0.20	Bet 0.32 23, 0.02 c, 0.00		
		Dist bet 0.64,0.16,0.00		
Gateshead ,Lincoln	,0.57,0.29,0.24,	11 Nov	0.36,0.25,0.40,	Bet, 0, 0, 0.21A
1.4 2.4	Odds ,1.74,3.50,4.20,cKelly--0.06,0.29,0.69	Bet 0.32 23, 0.02 c, 0.00		
		Dist bet 0.72,0.18,0.00		
Grimsby ,Halifax	,0.51,0.30,0.30,	11 Nov	0.43,0.24,0.33,	Bet, 0, 0, 0.03A
1.1 2.3	Odds ,1.95,3.30,3.30,cKelly--0.09,0.10,0.22	Bet 0.32 23, 0.26 5c, 0.00		
		Dist bet 0.22,0.03,0.00		
Dartford ,Welling Un,	0.46,0.29,0.41,	11 Nov	0.28,0.30,0.41,	Bet, 0, 0.02B, 0.01A
1.4 3.0	Odds ,2.18,3.45,2.46,cKelly--0.00,0.22,0.29	Bet 0.32 23, 0.72 5cdi, 0.52 j		
		Dist bet 0.44,0.00,0.03		
Dover Athl,Braintree	,0.49,0.32,0.33,	11 Nov	0.53,0.20,0.27,	Bet, 0U, 0, 0
1.2 2.8	Odds ,2.04,3.10,3.05,cKelly--0.43,0.06,0.12	Bet 0.96 23bi, 0.26 5c, 0.42 j		
		Dist bet 0.44,0.08,0.00		
Kiddermins,Aldershot	,0.93,0.79,0.94,	12 Nov	0.39,0.23,0.38,	Bet, 0, 0, 0
1.2 2.7	Odds ,1.07,1.26,1.06,cKelly--23.78,28.81,20.53	Bet 0.00 , 0.06 c, 0.32 23		
		Dist bet 0.26,0.16,0.00		
Telford Un,Altrincham	,0.94,0.80,0.94,	12 Nov	0.19,0.23,0.58,	Bet, 0, 0, 0
0.9 2.5	Odds ,1.06,1.25,1.06,cKelly--17.46,31.08,30.02	Bet 0.00 , 0.06 c, 0.32 23		
		Dist bet 0.27,0.16,0.00		
Woking ,Wrexham	,0.94,0.80,0.94,	12 Nov	0.33,0.35,0.33,	Bet, 0, 0, 0
1.5 3.0	Odds ,1.06,1.25,1.06,cKelly--24.84,34.52,24.37	Bet 0.00 , 0.06 c, 0.32 23		
		Dist bet 0.27,0.16,0.00		
Woking 3-2 Halifax	0.56,0.27,0.23	25/04Sa	0.31,0.35,0.35	
Odds ,1.80,3.75,4.30,	cKelly 0.00,0.52,0.56	Dist 0.73,0.00,0.26		
Welling Un 0-1 Southport	0.50,0.28,0.27	25/04Sa	0.37,0.27,0.36	
Odds ,2.00,3.60,3.70,	cKelly 0.01,0.15,0.39	Dist 0.27,0.00,0.09		
Torquay 1-1 Macclesfie	0.33,0.29,0.42	25/04Sa	0.24,0.26,0.51	
Odds ,3.00,3.40,2.38,	cKelly 0.04,0.08,0.47	Dist 0.18,0.00,0.17		
Telford Un 1-2 Wrexham	0.29,0.28,0.48	25/04Sa	0.14,0.29,0.56	
Odds ,3.40,3.60,2.10,	cKelly 0.00,0.15,0.54	Dist 0.96,0.00,0.33		
Grimsby 3-1 Aldershot	0.62,0.24,0.18	25/04Sa	0.59,0.14,0.26	
Odds ,1.60,4.10,5.50,	cKelly 0.16,0.04,0.28	Dist 0.85,0.12,0.00		
Forest Gre 0-0 Dover Athl	0.62,0.24,0.19	25/04Sa	0.39,0.25,0.35	
Odds ,1.62,4.10,5.20,	cKelly 0.00,0.31,0.62	Dist 0.86,0.13,0.00		
Eastleigh 2-1 Kiddermins	0.71,0.21,0.12	25/04Sa	0.49,0.23,0.28	
Odds ,1.40,4.80,8.00,	cKelly 0.00,0.38,0.54	Dist 0.65,0.06,0.00		
Dartford 0-0 Lincoln	0.37,0.29,0.39	25/04Sa	0.19,0.26,0.55	
Odds ,2.70,3.50,2.55,	cKelly 0.02,0.17,0.78	Dist 0.59,0.00,0.27		
Chester 5-3 Nuneaton T	0.62,0.24,0.19	25/04Sa	0.50,0.20,0.30	
Odds ,1.62,4.10,5.40,	cKelly 0.07,0.15,0.42	Dist 0.86,0.13,0.00		
Bristol Rv 7-0 Alfreton T	0.82,0.16,0.08	25/04Sa	0.61,0.27,0.12	
Odds ,1.22,6.25,13.00,	cKelly 0.00,0.63,0.28	Dist 0.99,0.00,0.16		
Braintree 4-2 Altrincham	0.42,0.29,0.34	25/04Sa	0.33,0.22,0.46	
Odds ,2.40,3.50,2.90,	cKelly 0.08,0.09,0.51	Dist 0.72,0.00,0.19		
Barnet 2-0 Gateshead	0.80,0.17,0.08	25/04Sa	0.48,0.24,0.28	
Odds ,1.25,6.00,12.00,	cKelly 0.00,0.70,0.70	Dist 0.99,0.00,0.18		
Aldershot 1-1 Wrexham	0.32,0.31,0.44	21/04Tu	0.26,0.27,0.47	
Odds ,3.10,3.20,2.25,	cKelly 0.04,0.06,0.21	Dist 0.13,0.33,0.00		
Wrexham 3-0 Braintree	0.51,0.29,0.25	18/04Sa	0.45,0.27,0.28	
Odds ,1.95,3.50,4.00,	cKelly 0.02,0.08,0.15	Dist 0.59,0.12,0.00		
Southport 2-2 Grimsby	0.23,0.28,0.54	18/04Sa	0.25,0.19,0.56	
Odds ,4.40,3.60,1.85,	cKelly 0.12,0.00,0.21	Dist 0.59,0.14,0.00		
Nuneaton T 1-1 Woking	0.17,0.26,0.62	18/04Sa	0.23,0.27,0.50	
Odds ,5.75,3.90,1.62,	cKelly 0.24,0.20,0.00	Dist 0.47,0.00,0.16		